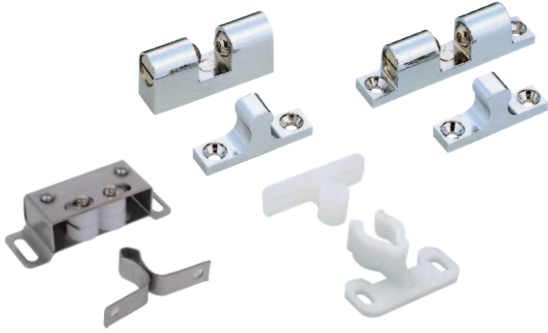


CATCHES

(TENSION, ROLLER, KNUCKLE, etc.)



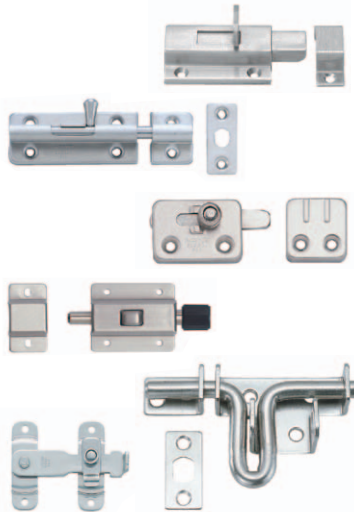
PUSH KNOB LATCHES



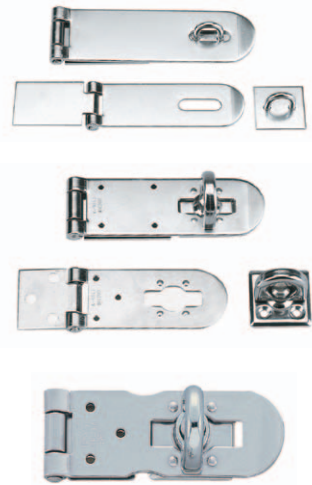
DRAW LATCHES / SLAM LATCHES



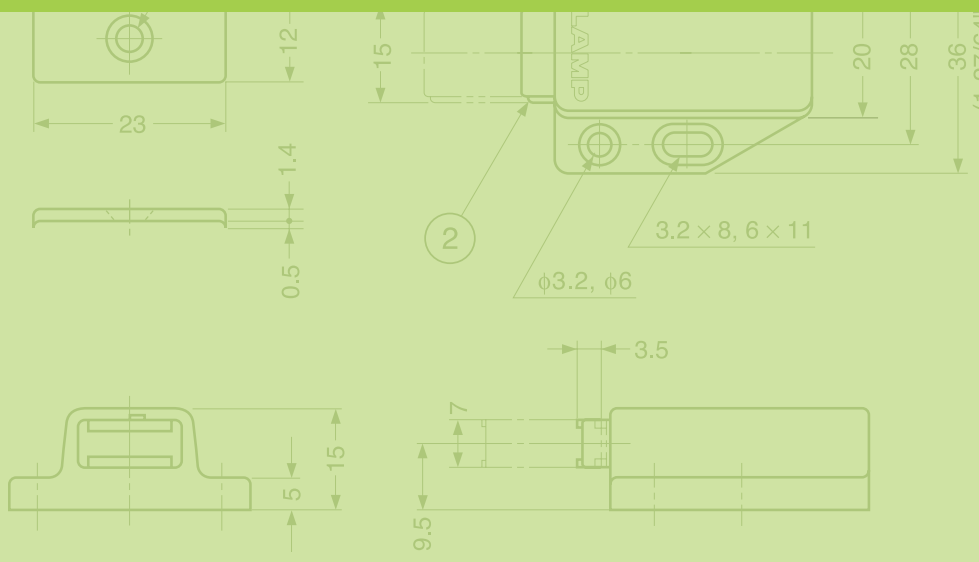
SLIDE BOLT / BAR LATCHES



HASPS



CATCHES & LATCHES



KNUCKLE CATCHES

Picture	Item Name	Push in / Pulling Force (kgf)	Page
	1-555-2	29 - 57 / 18 - 44	60
	NAC	3.1 / 2.7	60
	RCU	3.0 / 3.2	60
	JC-24, JC-26	2.2 - 3.1 / 1.7 - 2.7	61
	JCU	2.0 / 2.3	61
	JCU-F (SNAP-IN)	2 / 2	61
	JC-T50	3.3 / 3.8	61

NON MAGNETIC MINI CATCHES

Picture	Item Name	Retaining Force (kgf)	Page
	PR-21P	10	64
	PR-20P	-	64
	NS2	1	64
	PR-4PK	1.2	65
	PR-3PK	-	65
	ESN-195	3.5	65

ROTARY/ROLLER CATCHES

Picture	Item Name	Push in / Pulling Force (kgf)	Page
	RC6900, RC6901	1.1 - 2.2 / 1.6 - 3.2	60
	STBRC	1.0 / 2.7	63

NON MAGNETIC CATCHES

Picture	Item Name	Retaining Force (kgf)	Page
	MC-28	3	66
	MC-37	8	66

BALL CATCHES

Picture	Item Name	Push in / Pulling Force (kgf)	Page
	BCTS	2.0 - 5.7 / 1.3 - 3.9	62
	BCT	4.1 - 4.6 / 3.0 - 3.5	62
	BCU	3.6 - 4.1 / 2.4 - 3.9	63
	BCT-60W	3.2 / 2.7	63

LEVER LATCHES

Picture	Item Name	Retaining Force (kgf)	Page
	LL-66S	20	67
	LL-66	20	67




SLIDE / BARREL BOLTS		
Picture	Item Name	Page
	FL2	68
	FL4	68
	B-KR	69
	KR-50	69
	PRS-40	69
	KR65	70
	KR75	70
	HR35	70
	BL-40S, BL-60S	71
	BLS	71
	BL-40, BL-60	72
	BS	72
	BSS2/BSS3	73
	BSS	73
	BS-SL	74

BAR LATCHES / HASPS		
Picture	Item Name	Page
	SSG	74
	BLL	75
	BLT	75
	SSL	76
	HP-AK	76
	HP	77
	HP-635, 645, 660	77
	HP-635S, 645S, 660S	77










FASTENERS

Picture	Item Name		Page	Picture	Item Name		Page
	STF-100	STAINLESS 304 STEEL	78		P100	STAINLESS 304 STEEL	86
	STF-82L	STAINLESS 304 STEEL	78		P3-12, P3-11		86
	STF-80	STAINLESS 304 STEEL	79		PS, P	STAINLESS 304 STEEL	86
	STF-40	STAINLESS 304 STEEL	79		PS35	STAINLESS 304 STEEL	86
	CHN		79		P34		87
	STF-CV150	STAINLESS 316 STEEL	80		P11		87
	TF40C		80		P8		87
	STF-C64A, B	STAINLESS 304 STEEL	81		P91		87
	STH-C64	STAINLESS 304 STEEL	82		THF-100		88
	STF-A56AH, AC	STAINLESS 304 STEEL	82		THF-75		88
	SCC-60	STAINLESS 304 STEEL	83		PN-51	STAINLESS 304 STEEL	89
	SCC-40	STAINLESS 304 STEEL	83		P-1040/SS	STAINLESS 304 STEEL	89
	SCC-30	STAINLESS 304 STEEL	83		P-102H/SS	STAINLESS 304 STEEL	89
	SCCA-60		84	PUSH LOCK FASTENERS			
	SCCA-40		84		251F, 151F	Retaining Force (kgf)	Page
	PS34A		84		252F, 152F	25	90
	PS	STAINLESS 304 STEEL	85		255F, 155F	15	91
	P3		85		255F, 155F	15	92
	P3-10N		85		149 SERIES	-	93


HANDLE LATCHES

Picture	Item Name	Page
	LH-203	94
	WB-901503, WB-901504	96
	WB-901551, WB-901552	96

FLUSH SLAM LATCHES

Picture	Item Name	Page
	LC-65A	94
	LC-48	94
	WB-900418, WB-900408	95
	P10	95
	ATL-64	95
	LJ-61	96
	SX-48	98
	LC-PK32-L	98
	LC-PK32-K	99

DAMPER CATCHES

Picture	Item Name	Page
	DC	97

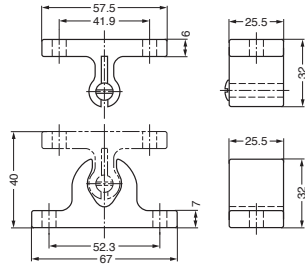
SLIDING DOOR LATCHES

Picture	Item Name	Page
	HC-30R	100
	HC-30	100
	HC-30H	101
	HC-70	101
	HC-70H	102
	HC-30L	102
	HC-30HL	103
	HC-65	103
	HHC-85	104
	HC-85SS	104

ADJUSTABLE KNUCKLE CATCH



1-555-2



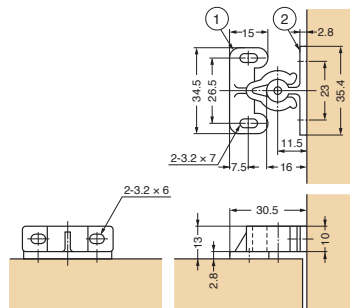
- Grabs and holds doors tightly.
- Strong catch force.
- Catch force is adjustable by turning adjustment screw.

Item Code	Item Name	Material	Color	Push in Force		Pulling Force		Weight
140-050-120	1-555-2I	Polyamide	Ivory	127.4 ~ 254.8N	13 ~ 26kgf	78.4 ~ 196N	8 ~ 20kgf	42g
140-059-516	1-555-2B	Polyamide	Black	127.4 ~ 254.8N	13 ~ 26kgf	78.4 ~ 196N	8 ~ 20kgf	42g

KNUCKLE CATCH

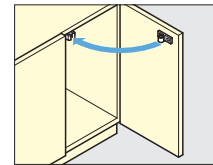


NAC



- Grabs and holds doors tightly.

Installation

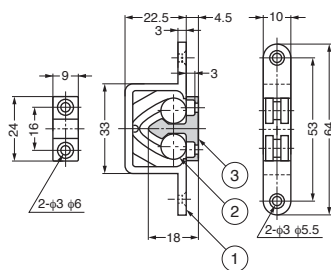


Item Code	Item Name	Push in Force		Pulling Force		Weight	Box	Carton	No.	Material	Color
140-051-013	NAC	55.8N	5.7kgf	69.5N	7.1kgf	4.5g	100pcs	1,000pcs	①	Polyacetal	Natural
									②	Polyamide	Natural

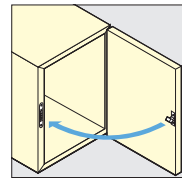
ROTARY CATCH (MORTISE TYPE)



RCU



Installation



- Mortise catch for overlay doors.

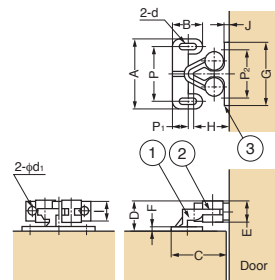
No.	Material	Color
①	Polyacetal	Natural
②	Polyethylene	Natural
③	Polyacetal	Natural

Item Code	Item Name	Push in Force		Pulling Force		Weight	Box	Carton
140-051-014	RCU	29.4N	3.0kgf	31.4N	3.2kgf	8g	100pcs	800pcs

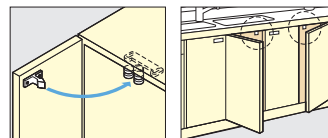
ROTARY CATCH



RC6900, RC6901



Installation



- Grabs and holds doors tightly.

No.	Material	Color
①	Polyacetal	Natural
②	Polyethylene	Natural
③	Polyacetal	Natural

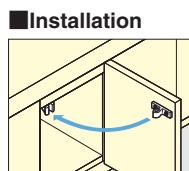
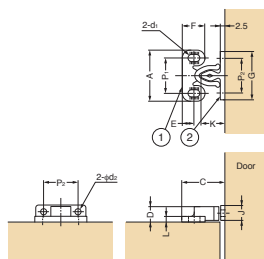
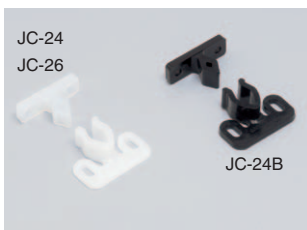
Item Name	Push in Force		Pulling Force	
RC6900	10.8N	1.1kgf	15.7N	1.6kgf
RC6901	21.6N	2.2kgf	31.4N	3.2kgf

Item Code	Item Name	A	B	C	D	E	F	P	P ₁	G	H	I	J	P ₂	d	d ₁	Weight	Box	Carton
140-050-209	RC6900	29	12	21.2	11.3	8	2	21.5	6	26	13.5	7.5	1.7	20	3.1x7	3	3g	100pcs	2,000pcs
140-051-015	RC6901	31.3	14	27.2	12.6	9	2.3	24.4	7.5	32	16.5	9	2	23.6	3.1x7	3.1	4g	100pcs	2,000pcs

KNUCKLE CATCH



JC-24, JC-26



- Grabs and holds doors tightly.

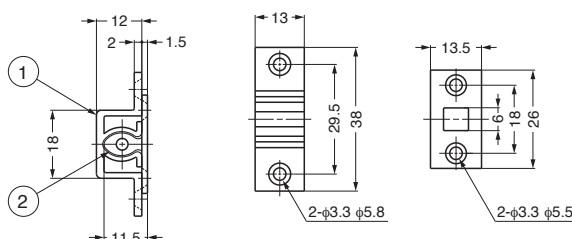
No.	Part Name	Material	Color
①	Catch	Polyacetal	Natural/Black
②	Strike	Polyamide	Natural/Black

Item Code	Item Name	A	P1	C	D	E	F	G	P2	J	K	L	d1	d2	Push in Force	Pulling Force	Weight	Box	Carton		
140-050-046	JC-24	24	17	21.5	7.5	7	12	22	15.5	7.5	12.5	2	2.5x5.5	2.5	30.4N	3.1kgf	26.5N	2.7kgf	1.5g	100pcs	2,000pcs
140-916-119	JC-24B	24	17	21.5	7.5	7	12	22	15.5	7.5	12.5	2	2.5x5.5	2.5	30.4N	3.1kgf	26.5N	2.7kgf	1.5g	100pcs	2,000pcs
140-051-018	JC-26	26	18	21.5	7.5	6	12	24.5	17	7.5	12.5	2.5	3.3x6	3.3	21.6N	2.2kgf	16.7N	1.7kgf	2g	100pcs	5,000pcs

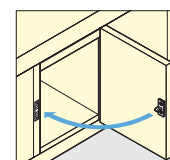
KNUCKLE CATCH (MORTISE TYPE)



JCU



Installation



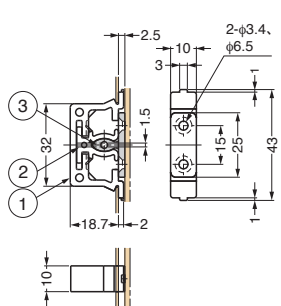
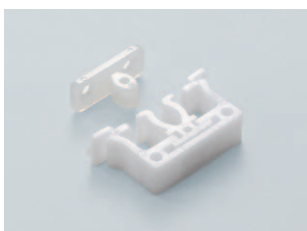
- Mortise catch for overlay doors.

Item Code	Item Name	Push in Force	Pulling Force	Weight	Box	Carton	No.	Part Name	Material	Color		
140-051-020	JCU	19.6N	2.0kgf	22.5N	2.3kgf	3.5g	50pcs	1,000pcs	①	Catch	Polyacetal	Natural
									②	Strike	Polyamide	Natural

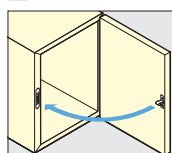
SNAP-IN KNUCKLE CATCH



JCU-F

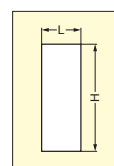


Installation



- Grabs and holds doors tightly.
- Snap-in type body for easy installation.
- Designed for sheet metal or plastic panel applications.
- Internal catch body slides 1.5mm for better alignment.

No.	Material	Color
①	Polyacetal	Natural
②	Polyacetal	Natural
③	Polyamide	Natural

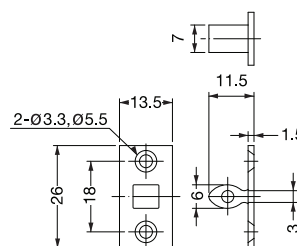
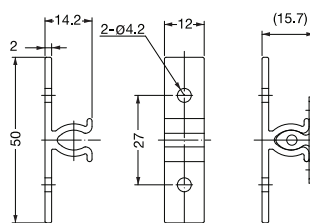
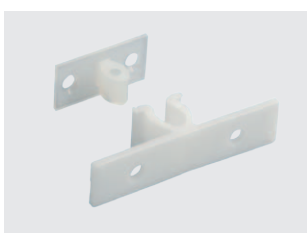


Sheet metal thickness	L	H
0.8mm	10.1mm	32.3mm
1.0mm	10.1mm	32.9mm
1.2mm	10.1mm	33.8mm

Item Code	Item Name	Push in Force	Pulling Force	Weight	Box	Carton		
140-051-112	JCU-F	19.6N	2.0kgf	19.6N	2.0kgf	5.2g	40pcs	800pcs

KNUCKLE CATCH

JC-T50



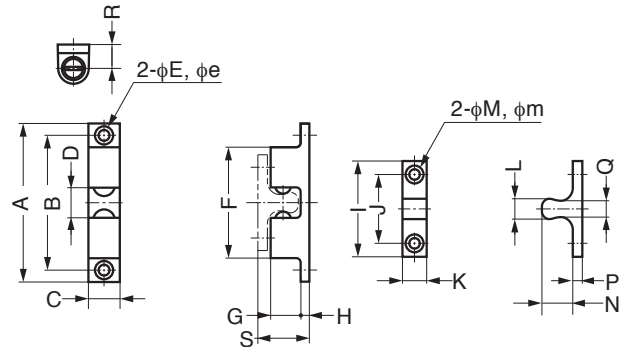
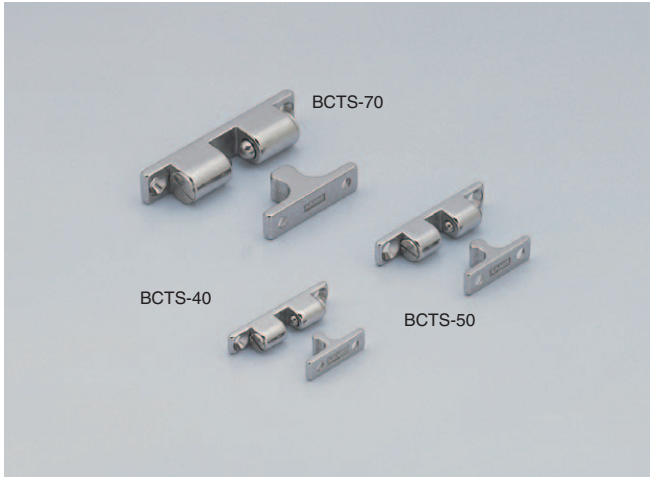
Item Code	Item Name	Push in Force	Pulling Force	Weight	Box	Carton	Part Name	Material	Color
140-019-545	JC-T50	3.3kgf	3.8kgf	9g	50pcs	500pcs	Catch	Polyacetal	White
							Strike	Polyamide	Natural White

STAINLESS STEEL TENSION CATCH



BCTS

- 316 stainless steel catch for harsh environments.
- Catch force is not adjustable.



Item Code	Item Name	Push in Force		Pulling Force		Weight	Box	Carton
140-050-242	BCTS-40	20N	2kgf	13N	1.3kgf	18g	50pcs	500pcs
140-050-241	BCTS-50	23N	2.3kgf	18N	1.8kgf	30g	50pcs	500pcs
140-050-240	BCTS-70	56N	5.7kgf	38N	3.9kgf	83g	25pcs	250pcs

Material	Finish
Stainless Steel(SCS14)	Polished

*SCC14 is similar to SUS316

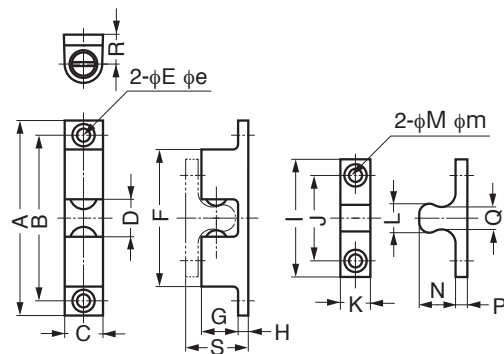
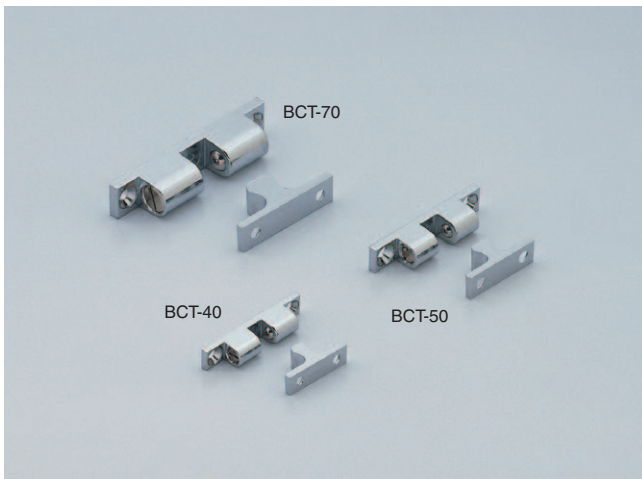
Item Name	A	B	C	D	E	e	F	G	H	I	J	K	L	M	m	N	P	Q	R	S
BCTS-40	43	35	8	5.9	3.2	6.2	28.4	7.5	2.5	25	16	7.5	4.5	3.2	6.2	8.5	2.5	2.7	6	13.5
BCTS-50	50	40	10	7.5	4.2	8.2	31.5	9.3	2.9	30	20	9	6	4.2	8.2	10.3	2.9	3.8	7.7	16.1
BCTS-70	70	60	13	13	4.2	8.2	51	13	4	42	30	10.5	10	4.2	8.2	15	4	8	10.5	23

TENSION CATCH



BCT

- Catch force is not adjustable.



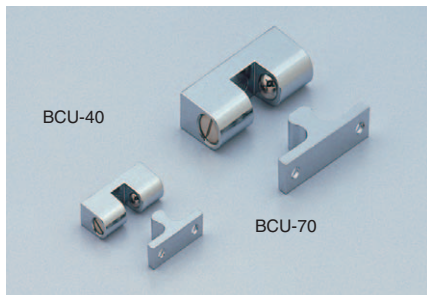
Item Code	Item Name	Push in Force		Pulling Force		Material	Finish	Weight	Box	Carton
140-050-108	BCT-40	43.1N	4.4kgf	29.4N	3.0kgf	Zinc Alloy	Chrome	16g	100pcs	400pcs
140-050-107	BCT-50	40.2N	4.1kgf	32.3N	3.3kgf	Zinc Alloy	Chrome	26g	100pcs	400pcs
140-050-106	BCT-70	45.1N	4.6kgf	34.3N	3.5kgf	Zinc Alloy	Chrome	70g	50pcs	200pcs

Item Name	A	B	C	D	E	e	F	G	H	I	J	K	L	M	m	N	P	Q	R	S
BCT-40	42.5	35	8	6.3	3.2	6.2	26.7	7.5	2.5	25	16	7.5	5.5	3.2	6.2	8.8	2.5	3.7	6.5	14
BCT-50	50	40	10	8.4	4.2	8.2	29.8	9.5	3	30	20	9	7.3	4.2	8.2	9.8	2.5	4.7	7.4	16
BCT-70	70	60	13.5	12	4.2	8.2	49	13	4	42	30	10.5	11	4.2	8.2	14.2	3	8.2	11	21.2

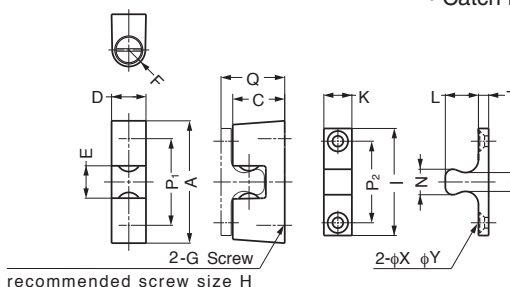
TENSION CATCH



BCU



• Catch force is not adjustable.



Item Code	Item Name	Push in Force		Pulling Force		Material	Finish	Weight	Box	Carton
140-050-103	BCU-40	35.3N	3.6kgf	23.5N	2.4kgf	Zinc Alloy	Chrome	18g	100pcs	400pcs
140-050-104	BCU-70	40.2N	4.1kgf	38.2N	3.9kgf	Zinc Alloy	Chrome	75g	50pcs	200pcs

Item Name	A	P ₁	C	D	E	F	G	H	I	P ₂	K	L	N	P	T	X	Y	Q
BCU-40	28.5	20	12.5	8.3	6.5	R4	M3	5	24	16	8	9	5	3	3	3.2	6.2	15.7
BCU-70	48	34	20.5	13.5	12.7	R6.5	M5	6	42	32	11	13	10	7.3	4	4.2	8.2	24.9

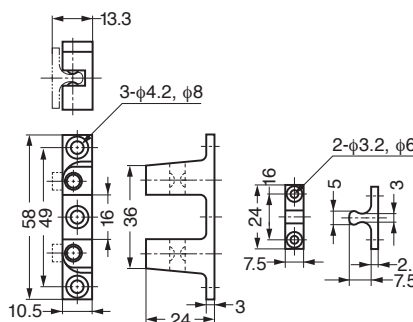
TENSION CATCH



BCT-60W



• Double catch for dual doors that meet in the center.

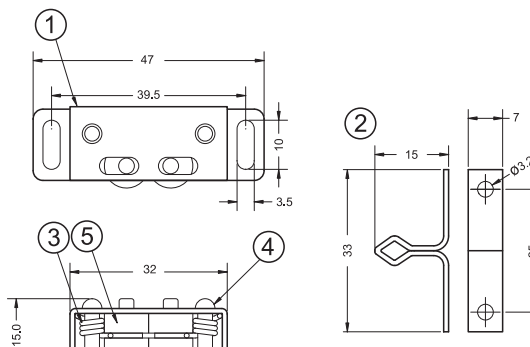
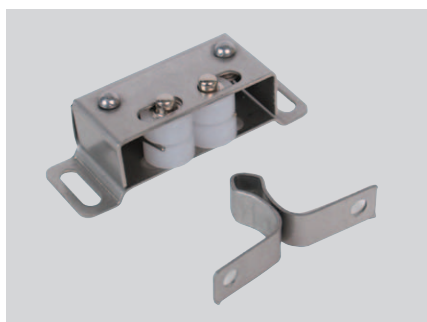


Item Code	Item Name	Push in Force		Pulling Force		Material	Finish	Weight	Box	Carton
140-059-035	BCT-60W	31.4N	3.2kgf	26.5N	2.7kgf	Zinc Alloy	Chrome	39.5g	80pcs	320pcs

STAINLESS STEEL ROLLER CATCH



STBRC



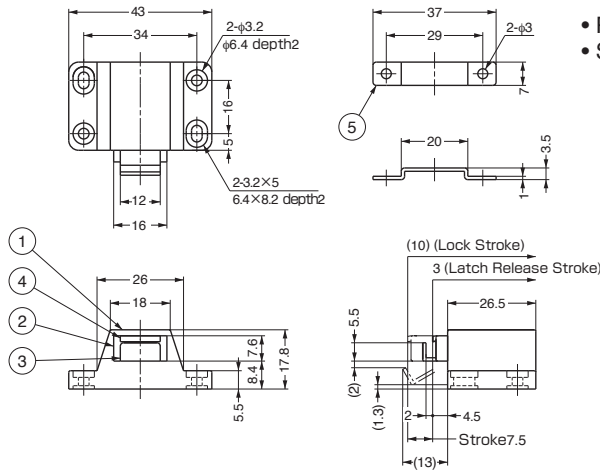
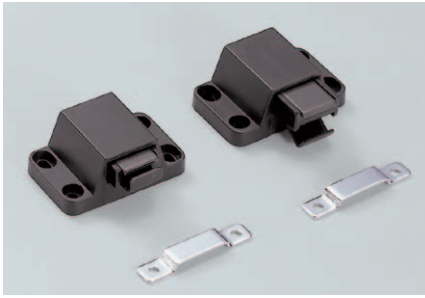
No.	Part Name	Material	Finish
①	Body	304 Stainless Steel	Plain
②	Strike		
③	Spring	430 Stainless Steel	White
④	Rivet		
⑤	Roller	Polyethylene	

Item Code	Item Name	Push in Force		Pulling Force		Weight	Box	Carton
140-098-005	STBRC	1.0kgf		2.7kgf		18g	60pcs	1,200pcs

NON-MAGNETIC TOUCH LATCH



PR-21P



- Push to latch / unlatch.
- Strong retaining force.

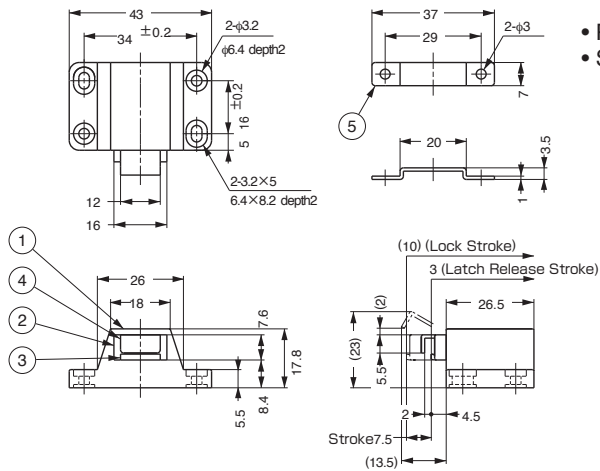
No.	Part Name	Material	Finish/Color
①	Body	ABS	Black, Brown
②	Slide	Polyacetal	Black, Brown
③	Arm	Steel	Paint/Brown
④	Yoke	Steel	GB
⑤	Strike	Steel	Chrome

Item Code	Item Name	Color	Weight	Box	Carton
140-050-277	PR-21PK	Black	16.3g	100pcs	800pcs
140-050-272	PR-21PD	Brown	16.3g	100pcs	800pcs

NON-MAGNETIC TOUCH LATCH



PR-20P



- Push to latch / unlatch.
- Strong retaining force.

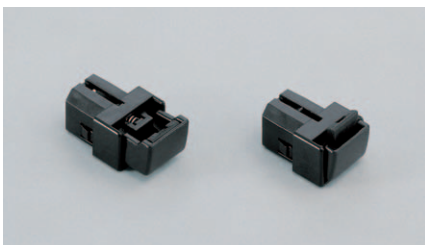
No.	Part Name	Material	Finish/Color
①	Body	ABS Plastic	Black, Brown
②	Slide	Polyacetal	Black, Brown
③	Arm	Steel	Paint/Brown
④	Yoke	Steel	Bronze
⑤	Strike	Steel	Chrome

Item Code	Item Name	Color	Weight	Box	Carton
140-050-276	PR-20PK	Black	16.3g	100pcs	800pcs
140-050-274	PR-20PD	Brown	16.3g	100pcs	800pcs

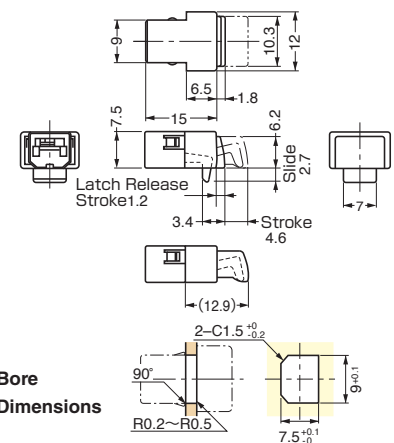
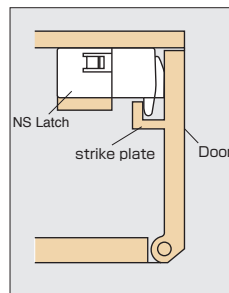
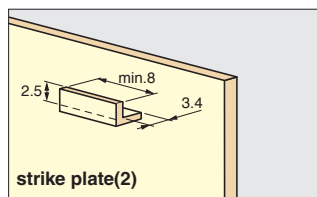
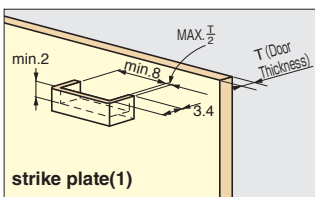
NON-MAGNETIC MINI TOUCH LATCH



NS2



- Push to latch / unlatch.
- Miniature design is ideal for small applications.

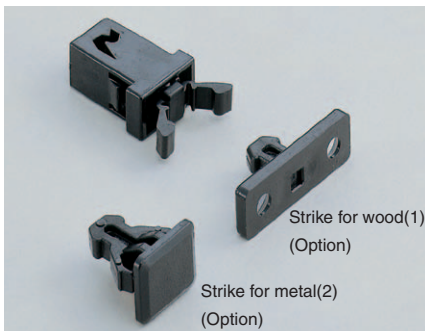


Item Code	Item Name	Material	Door Thickness	Color	Weight	Box
140-059-098	NS2	Polycarbonate	2	Black	1.1g	500pcs

NON-MAGNETIC MINI TOUCH LATCH



PR4PK

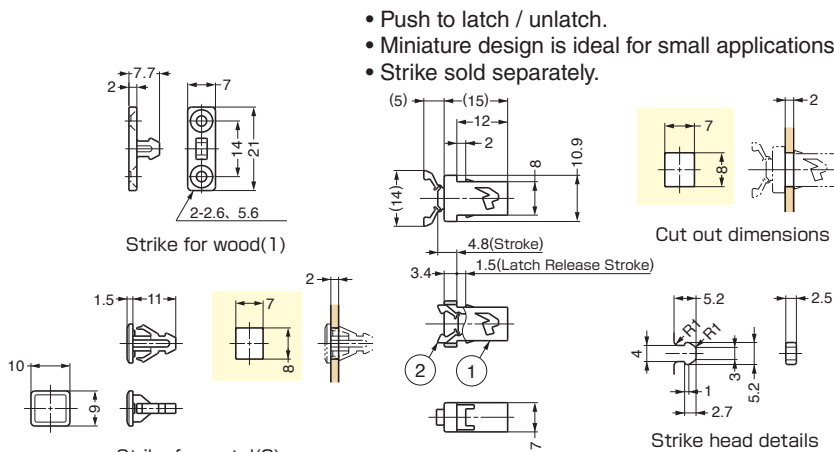


Strike plates

Item Code	Item Name	Material
140-059-019	PR4PK-1	Polyacetal
140-059-018	PR4PK-2	Polyacetal

Body

Item Code	Item Name	Retaining Force	Door Thickness	Weight	Box	
140-050-118	PR4PK-B	12N	1.2kgf	2	0.7g	1,000pcs



No.	Part Name	Material	Color
①	Body	Polyacetal	Black
②	Arms	Polyamide	Black

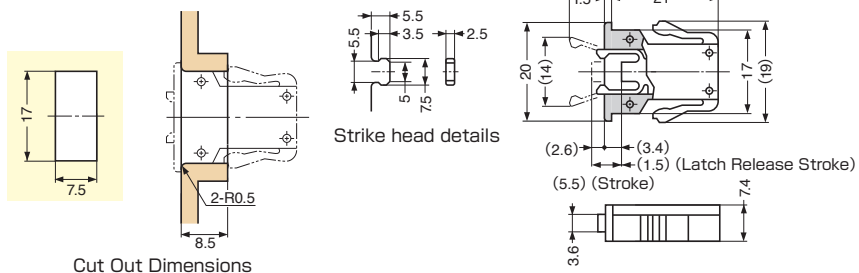
NON-MAGNETIC TOUCH LATCH



PR3PK



- Push to latch / unlatch.
- Thin design is ideal for tight spaces.



Item Code	Item Name	Material	Color	Weight	Box
140-050-239	PR3PK	ABS	Black	2.5g	400pcs

NON-MAGNETIC MINI TOUCH LATCH



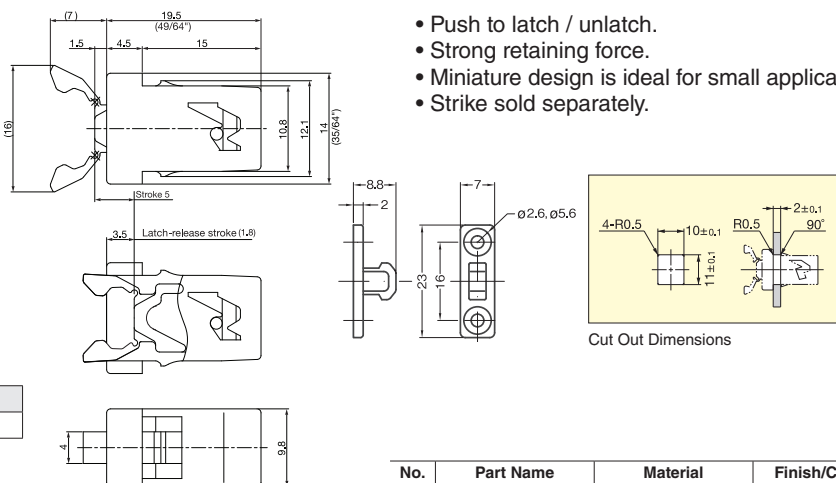
ESN-195



Strike plate

Item Code	Item Name	Material
140-014-075	ESN-195-1	Polyacetal

Item Code	Item Name	Retaining Force	Weight	Box
140-059-195	ESN-195	3.5kgf	2.3g	5,000pcs



No.	Part Name	Material	Finish/Color
①	Body	Polyacetal	Black
②	Catch	Polyamide	
③	Spring	Steel	Chromate

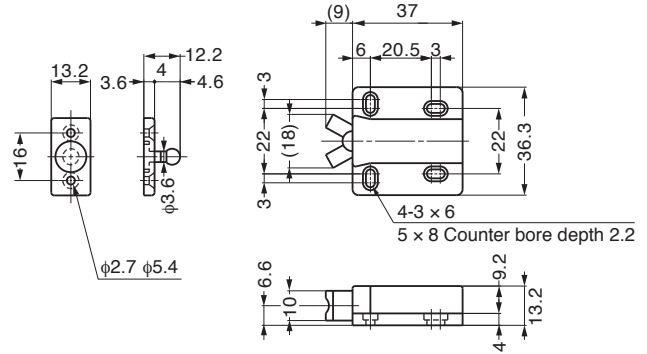
NON-MAGNETIC TOUCH LATCH



MC-28



- Push to latch / unlatch.
- Touch latch with floating strike allows for easy alignment.
- Note: For overlay door, allow 3mm gap between door and cabinet frame for push space. Pulling door with excessive force without unlatching the unit may damage the mechanism. Constant loading of over 3kgf or excessive pushing or pulling is not recommended.

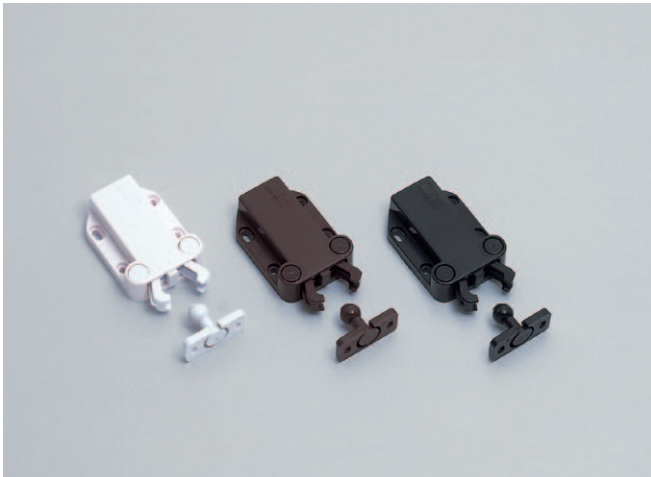


Item Code	Item Name	Material	Color	Retaining Force	Weight	Box	Carton
140-059-203	MC-28	ABS	Black	29N 3kgf	15g	50pcs	500pcs

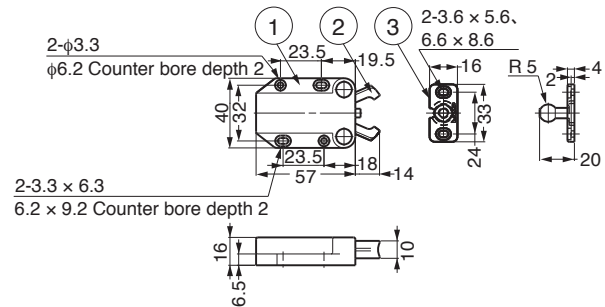
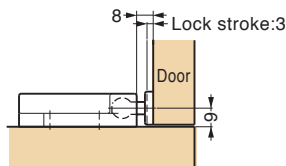
NON-MAGNETIC TOUCH LATCH



MC-37F



- Push to latch / unlatch.
- Strong Retaining Force.
- Floating strike allows for easy alignment.
- Note : For overlay door, allow 3mm gap between door and cabinet frame for push space. Pulling the door with excessive force without unlatching the unit may damage the mechanism. Constant loading of over 4kgf or excessive pushing or pulling is not recommended.



No.	Part Name	Material	Color
①	Body	ABS	Black, Brown, White
②	Arm	Polyacetal	Black, Brown, White
③	Strike	Polyamide	Black, Brown, White

Item Code	Item Name	Color	Retaining Force	Weight	Box	Carton
140-058-064	MC-37F-BK	Black	78N 8kgf	24g	30pcs	300pcs
140-058-066	MC-37F-BR	Brown	78N 8kgf	24g	30pcs	300pcs
140-058-065	MC-37F-WH	White	78N 8kgf	24g	30pcs	300pcs

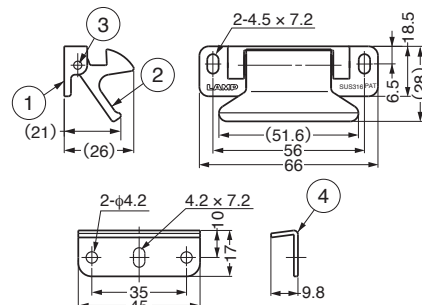
STAINLESS STEEL LEVER LATCH



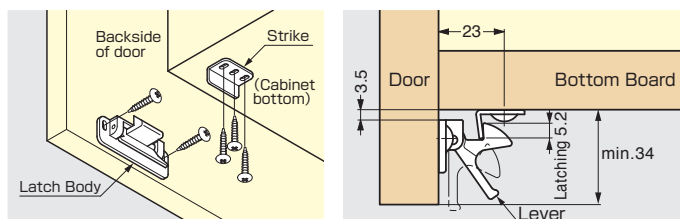
LL-66S



- Latch designed to be used on a door without knobs or handles.
- 316 Stainless steel construction makes it ideal for harsh and high corrosive environments.



No.	Part Name	Material	Finish
①	Latch Body	Stainless Steel(SCS14)	Mirror
②	Lever	Stainless Steel(SCS14)	Mirror
③	Shaft	Stainless Steel(SUS316)	Plain
④	Strike	Stainless Steel(SUS316)	Mirror



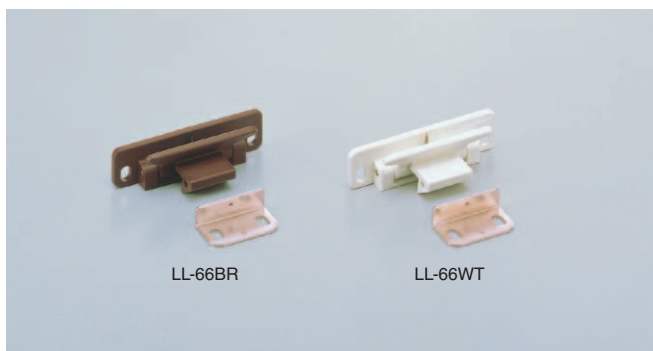
Item Code	Item Name	Material	Retaining Force	Weight	Box	Carton
140-051-030	LL-66S	Stainless Steel (SCS14)	196N 20kgf	85g	20pcs	100pcs

※SCS14 is similar to SUS316

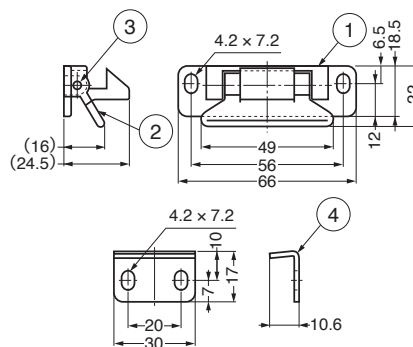
LEVER LATCH



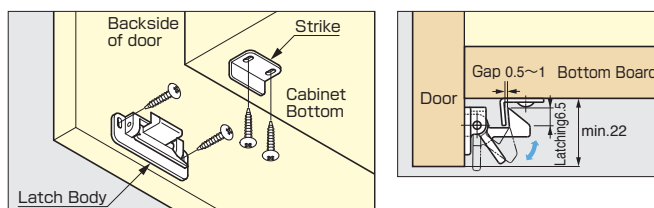
LL-66



- Latch designed to be used on a door without knobs or handles.
- LL-66 GR is flame resistance as per UL94V-O.



No.	Part Name	Material	Finish/Color
①	Latch Body	Polyamide	White, Brown, Gray
②	Lever	Polyamide	White, Brown, Gray
③	Shaft	Steel	Yellow Zinc Chromate
④	Strike	Steel	Nickel

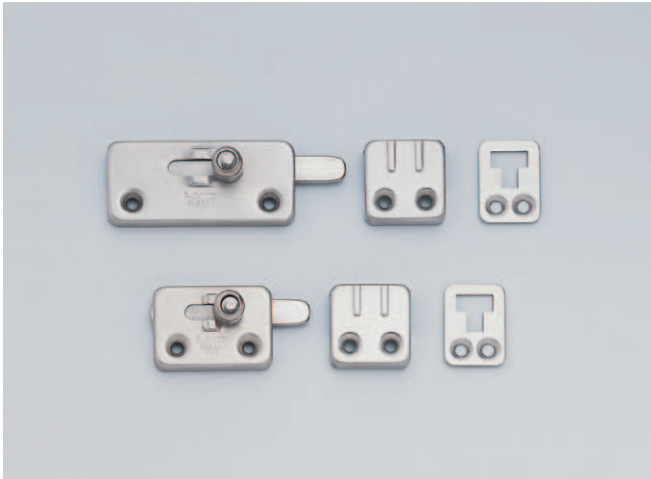


Item Code	Item Name	Spec.	Color	Retaining Force	Weight	Box	Carton
140-051-028	LL-66BR	—	Brown	196N 20kgf	25g	30pcs	300pcs
140-051-027	LL-66WT	—	White	196N 20kgf	25g	30pcs	300pcs
140-051-029	LL-66GR	Flame resistant	Grey	196N 20kgf	25g	30pcs	300pcs

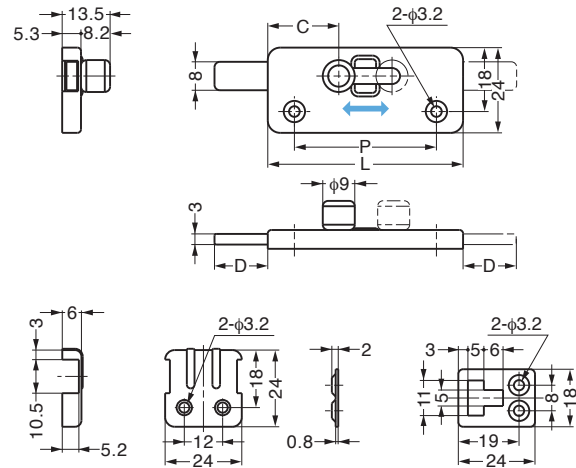
SLIDE BOLT



FL2



- Flat and compact design.
- Knob will be latched in open and closed position.
- 2 different counterplates included for different mountings.

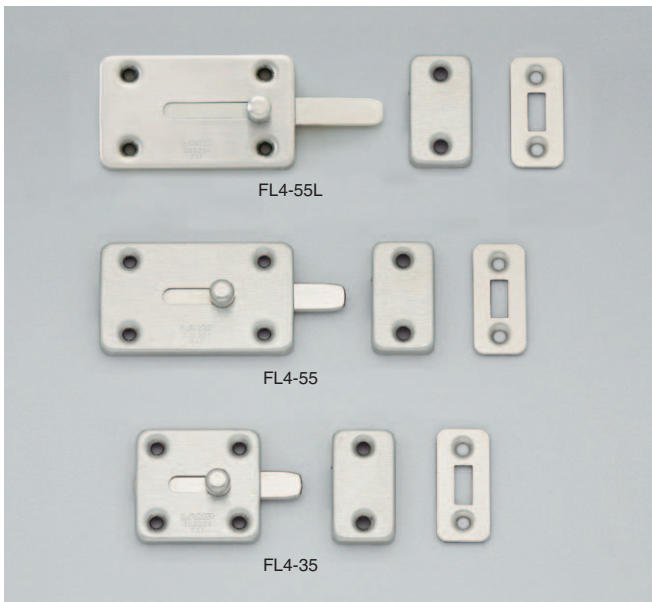


Item Code	Item Name	L	P	C	D	Material	Finish	Weight	Box	Carton
140-180-136	FL2-35	35	21	11.5	12	Stainless Steel(SUS304)	Satin	28g	30pcs	300pcs
140-180-137	FL2-55	55	40	20	15	Stainless Steel(SUS304)	Satin	39g	30pcs	300pcs

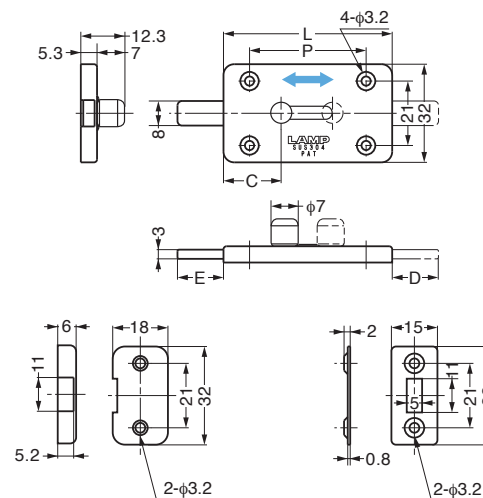
SLIDE BOLT



FL4



- Flat and compact design.
- Knob will be latched in open and closed position.
- 2 different counterplates included for different mountings.

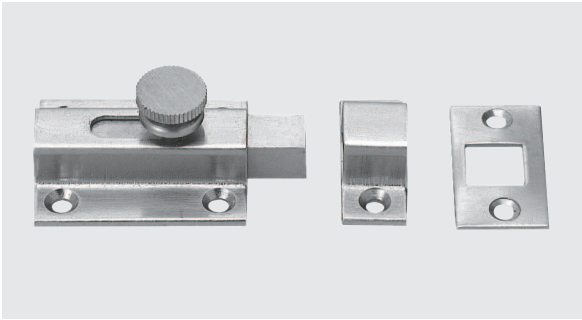


Item Code	Item Name	L	P	C	D	E	Material	Finish	Weight	Box	Carton
140-180-863	FL4-35	35	23	11.5	12	12	Stainless Steel(SUS304)	Satin	32g	30pcs	300pcs
140-180-864	FL4-55	55	38	20	15	15	Stainless Steel(SUS304)	Satin	47g	30pcs	300pcs
140-012-131	FL4-55L	55	38	20	25	15	Stainless Steel(SUS304)	Satin	47g	30pcs	300pcs

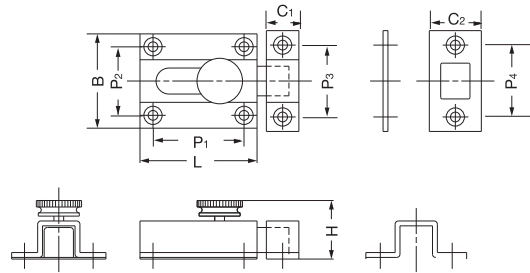
SLIDE BOLT



B-KR



- Knurled knob provides easy grip.
- 2 counterplates included for different mountings.



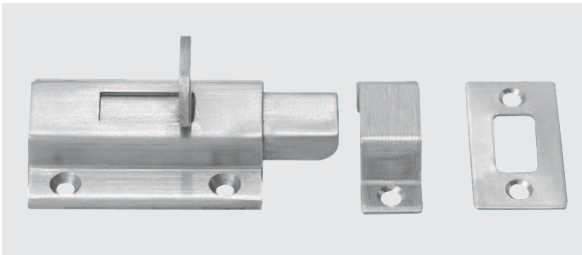
Material	Finish
Brass	Satin Nickel

Item Code	Item Name	L	B	H	C ₁	C ₂	P ₁	P ₂	P ₃	P ₄	Weight	Box	Carton
140-054-048	B-KR-35	36	29	18	11	16	26.5	19	20	21	60g	20pcs	200pcs
140-059-040	B-KR-45	45	30	18.5	12.5	17	33	20	22.5	21.5	80g	10pcs	200pcs

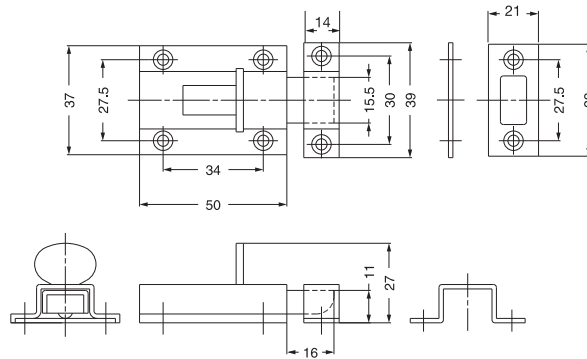
SLIDE BOLT



KR-50



- Tab style knob provides an easy grip.
- 2 counterplates included for different mountings.



Item Code	Item Name	Weight	Box	Carton	Material	Finish
140-913-942	KR-50	80g	20pcs	200pcs	304 Stainless Steel	Satin

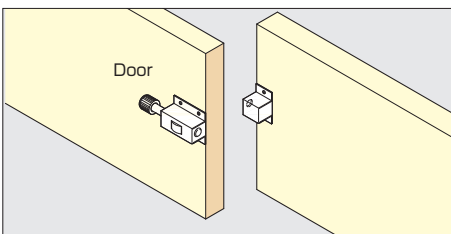
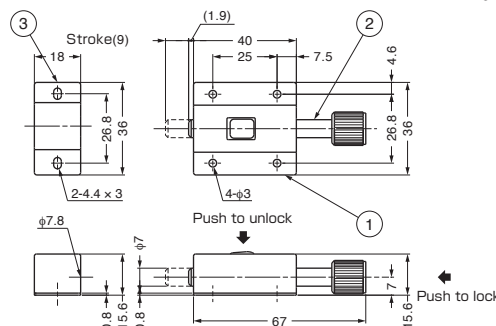
PUSH BARREL BOLT



PRS-40



- Simply push black knob to latch and push front button to release.



No.	Part Name	Material	Finish
①	Body	Stainless Steel(SUS304)	Satin
②	Bar	Stainless Steel(SUS303)	Satin
③	Strike	Stainless Steel(SUS304)	Satin

Item Code	Item Name	Weight
140-049-402	PRS-40	55g

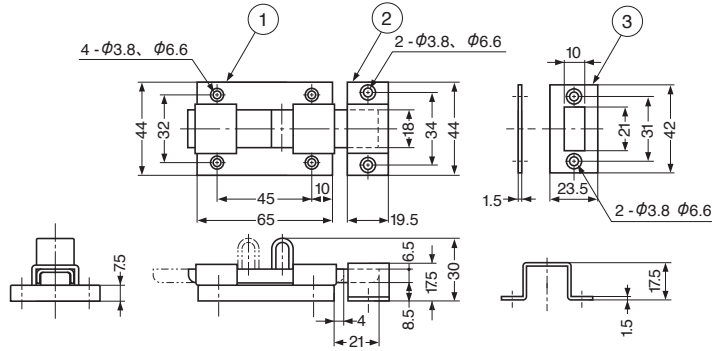
SLIDE BOLT



KR65



- Rounded tab prevents snagging.
- 2 counterplates included for different mountings.



No.	Part Name	Material	Finish
①	Body	Stainless Steel(SUS304)	Polished
②	StrikeA	Stainless Steel(SUS304)	Polished
③	StrikeB	Stainless Steel(SUS304)	Polished

Item Code	Item Name	Weight	Box
140-054-050	KR65	125g	10pcs

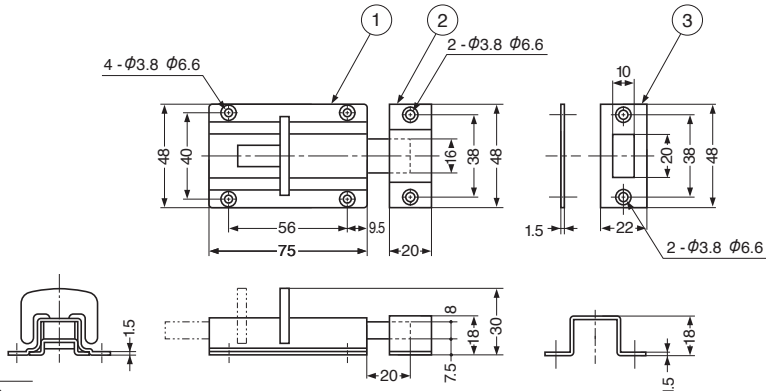
SLIDE BOLT



KR75



- Wing tab provides an easy grip.
- 2 counterplates included for different mountings.



No.	Part Name	Material	Finish
①	Body	Stainless Steel(SUS304)	Satin
②	StrikeA	Stainless Steel(SUS304)	Satin
③	StrikeB	Stainless Steel(SUS304)	Satin

Item Code	Item Name	Weight	Box
140-059-042	KR75	225g	10pcs

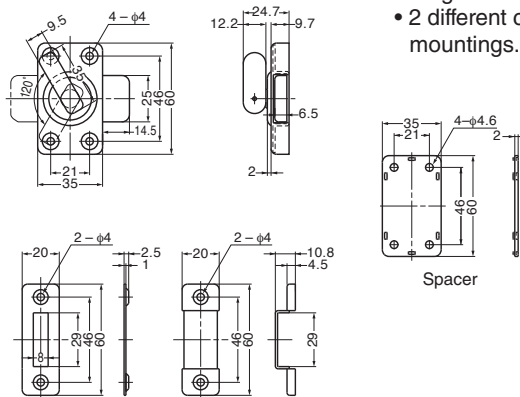
LEVER BOLT



HR35



- Large knob allows for easy operation.
- 2 different counterplates included for different mountings.



■ Spacer HR35SP-B(Optional)

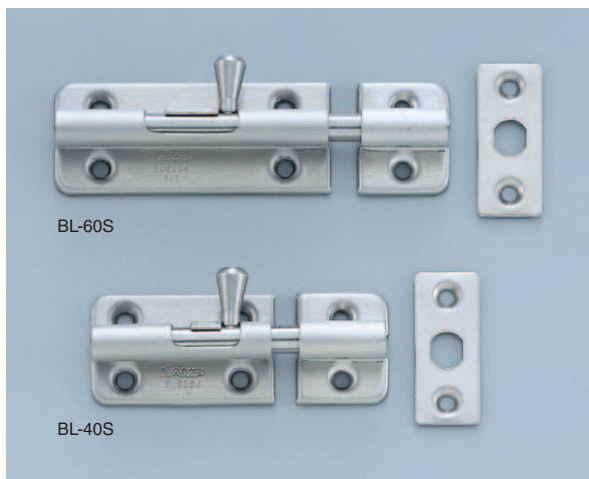


Item Code	Item Name	Spec.	Material	Finish	Weight	Box	Carton
140-180-135	HR35	Latch	Stainless Steel(SUS304)	Satin	108g	10pcs	100pcs
140-180-002	HR35SP-B	Spacer	Polyamide	Black	5g	250pcs	2,500pcs

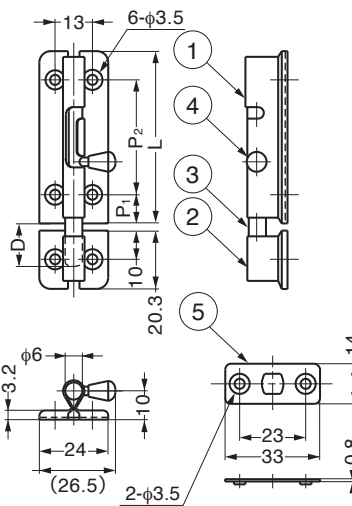
SPRING LOADED BARREL BOLT



BL-40S, BL-60S



- Knob springs back into sleeve to keep bolt in locked or unlocked position.
- 2 counterplates included for different mountings.



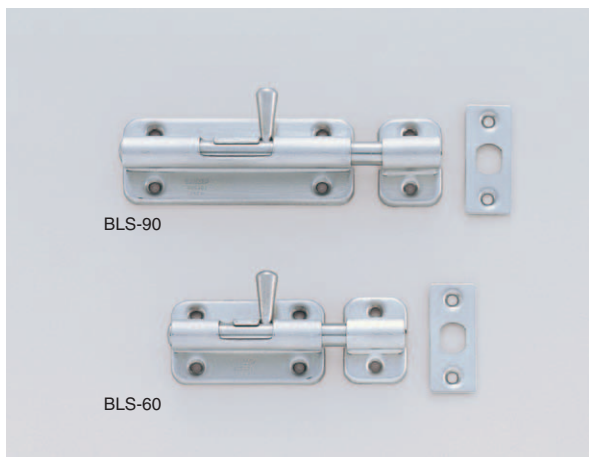
No.	Part Name	Material	Finish
①	Body	Stainless Steel(SUS304)	Satin
②	Strike	Stainless Steel(SUS304)	Satin
③	Bar	Stainless Steel(SUS303)	Plain
④	Knob	Stainless Steel(SUS303)	Plain
⑤	Strike	Stainless Steel(SUS304)	Satin

Item Code	Item Name	L	P ₁	P ₂	D	Weight	Box	Carton
140-050-245	BL-40S	40	7.5	25	11	36g	30pcs	450pcs
140-050-246	BL-60S	60	10	40	15	50g	30pcs	450pcs

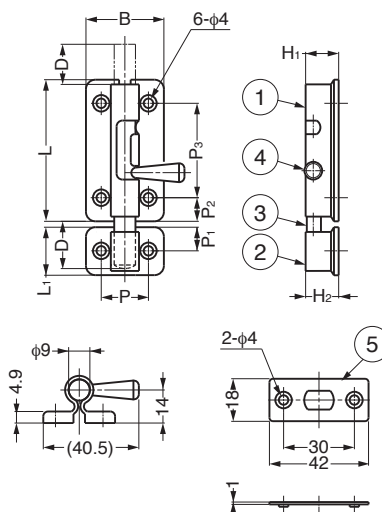
SPRING LOADED BARREL BOLT



BLS



- Knob springs back into sleeve to keep bolt in locked or unlocked position.
- 2 counterplates included for different mountings.



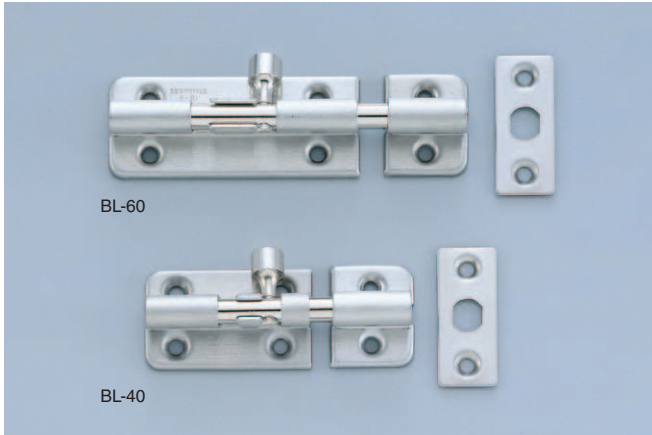
No.	Part Name	Material	Finish
①	Body	Stainless Steel(SUS304)	Satin
②	Strike	Stainless Steel(SUS304)	Satin
③	Bar	Stainless Steel(SUS303)	-
④	Knob	Stainless Steel(SUS303)	-
⑤	Strike	Stainless Steel(SUS304)	Satin

Item Code	Item Name	L	L ₁	H ₁	H ₂	B	P	P ₁	P ₂	P ₃	D	Weight	Box	Carton
140-052-000	BLS-60	60	25.4	20	20.4	33	20	12.7	10	40	17	109g	20pcs	200pcs
140-052-001	BLS-90	90	25.4	20	20.4	33	20	12.7	12.5	65	24	147g	15pcs	150pcs

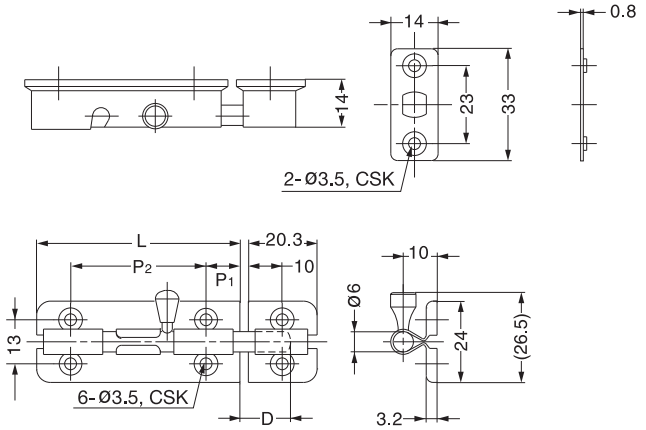
BARREL BOLT



BL-40, BL-60



- 2 counterplates included for different mountings.



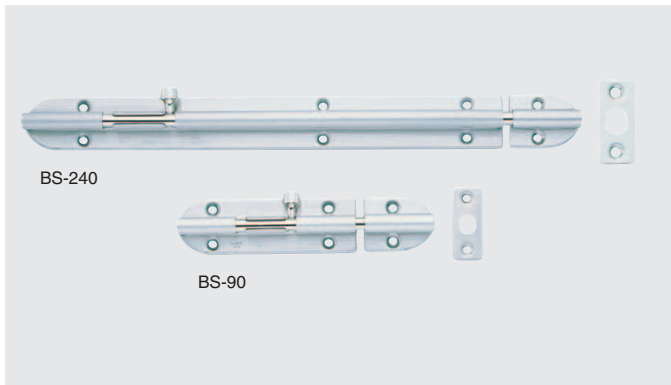
Item Code	Item Name	L	P ₁	P ₂	D	Weight	Box	Carton
140-050-247	BL-40	40	7.5	25	11	36g	30pcs	450pcs
140-051-053	BL-60	60	10	40	15	50g	30pcs	450pcs

Part Name	Material	Finish
Body and Plates	304 Stainless Steel	Satin
Bolt and Knob	Brass	Nickel

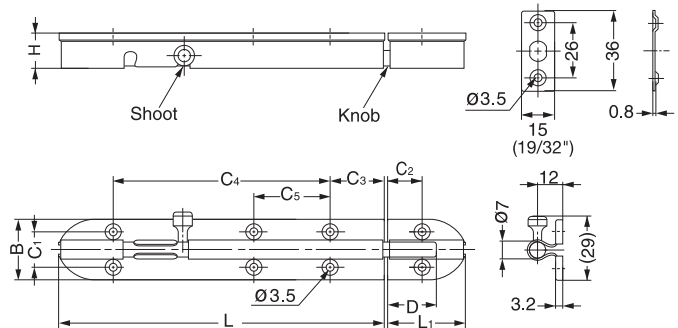
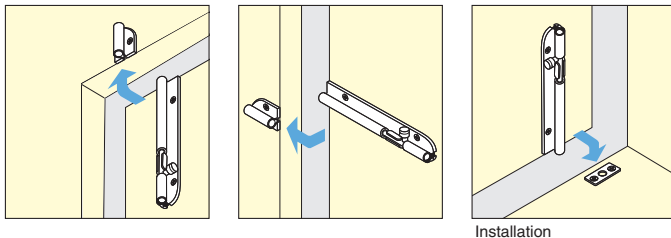
BARREL BOLT



BS



- Knob springs back into sleeve to keep bolt in locked or unlocked position.
- 2 counterplates included for different mountings.



Part Name	Material	Finish
Body and Plates	304 Stainless Steel	Satin
Bolt and Knob	Brass	Nickel

Item Code	Item Name	L	L ₁	H	B	C ₁	C ₂	C ₃	C ₄	C ₅	D	Weight	Box	Carton
140-051-050	BS-90	90	36	16.5	27	16	15	14.5	58	-	24	85g	30pcs	300pcs
140-051-051	BS-150	150	36	16.5	27	16	15	25	100	-	24	125g	20pcs	200pcs
140-051-052	BS-240	240	36	16.5	27	16	15	18.5	192	71	30	190g	10pcs	100pcs

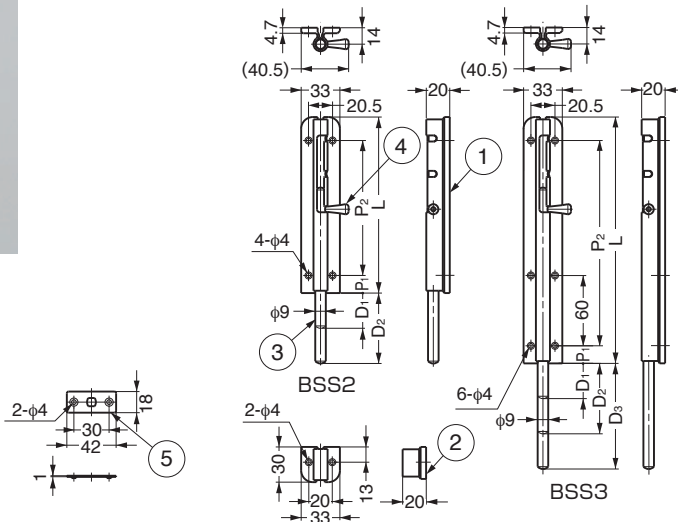
SPRING LOADED BARREL BOLT



BSS2, BSS3



- Knob springs back into sleeve to keep bolt in locked or unlocked position.
- Extra sleeve for locking offers flexibility in application.
- Designed for applications where a longer throw is needed.
- 2 counterplates included for different mountings.



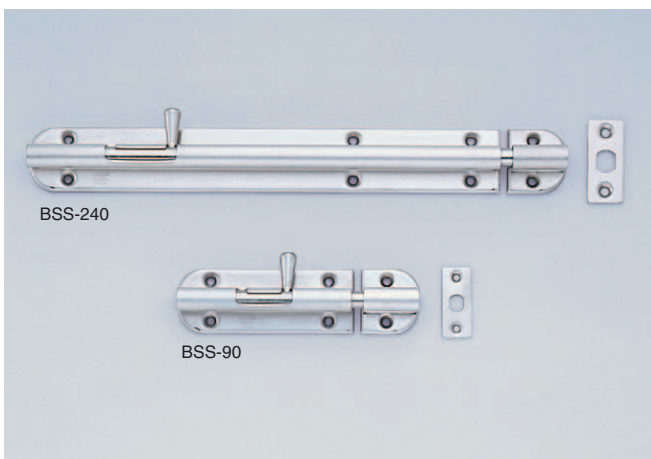
No.	Part Name	Material	Finish
①	Body	Stainless Steel(SUS304)	Satin
②	Strike	Stainless Steel(SUS304)	Satin
③	Bar	Stainless Steel(SUS303)	-
④	Knob	Stainless Steel(SUS303)	-
⑤	Strike	Stainless Steel(SUS304)	Satin

Item Code	Item Name	L	P ₁	P ₂	D ₁	D ₂	D ₃	Weight	Box	Carton
140-050-042	BSS2-90	90	13	60	21	42	—	140g	15pcs	150pcs
140-050-041	BSS2-150	150	15	115	30	60	—	212g	10pcs	100pcs
140-050-043	BSS3-240	240	15	205	30	60	90	320g	6pcs	60pcs

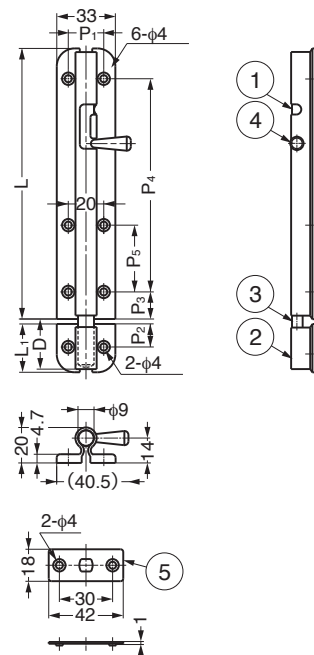
SPRING LOADED BARREL BOLT



BSS



- Knob springs back into sleeve to keep bolt in locked or unlocked position.
- 2 counterplates included for different mountings.



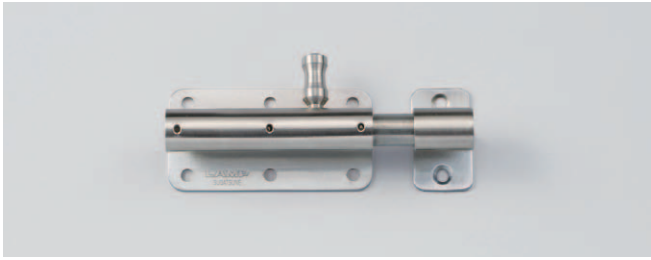
No.	Part Name	Material	Finish
①	Body	Stainless Steel(SUS304)	Satin
②	Strike	Stainless Steel(SUS304)	Satin
③	Bar	Stainless Steel(SUS303)	-
④	Knob	Stainless Steel(SUS303)	-
⑤	Strike	Stainless Steel(SUS304)	Satin

Item Code	Item Name	L	L ₁	P ₁	P ₂	P ₃	P ₄	P ₅	D	Weight	Box	Carton
140-052-002	BSS-90	90	30	20.5	13	13	60	-	24	142g	15pcs	150pcs
140-052-003	BSS-150	150	30	20.5	13	15	115	-	32	215g	10pcs	100pcs
140-052-004	BSS-240	240	30	20.5	13	15	205	60	32	330g	6pcs	60pcs

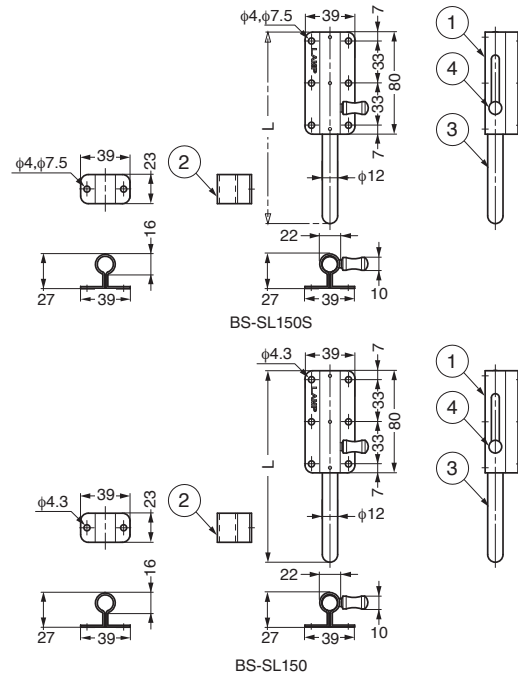
SPRING LOADED BARREL BOLT



BS-SL



- Weather resistance full 304 Stainless Steel construction.
- Temporary holding system for smooth locking and unlocking.
- Knob springs back into sleeve to keep bolt in locked or unlocked position.



No.	Part Name	Material	Finish
①	Body	Stainless Steel(SUS304)	Satin
②	Strike	Stainless Steel(SUS304)	Satin
③	Bar	Stainless Steel(SUS303)	-
④	Knob	Stainless Steel(SUS303)	-

Item Code	Item Name	L	Box	Carton
140-022-286	BS-SL150S	150	2pcs	40pcs
140-022-287	BS-SL300S	300	2pcs	30pcs
140-022-288	BS-SL450S	450	2pcs	30pcs
140-022-283	BS-SL150	150	2pcs	40pcs
140-022-284	BS-SL300	300	2pcs	30pcs
140-022-285	BS-SL450	450	2pcs	30pcs

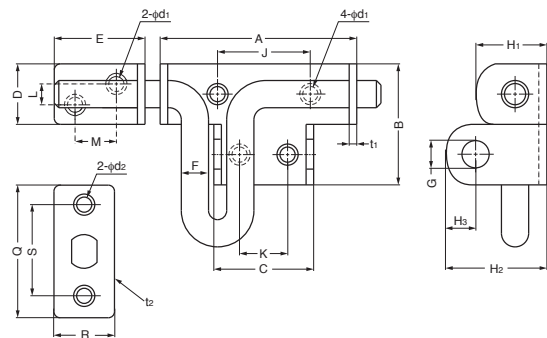
GATE LATCH



SSG



- Gate latch with holes for pad lock. (Pad lock not included.)
- Lift and drop design keeps handle out of the way when not in use.



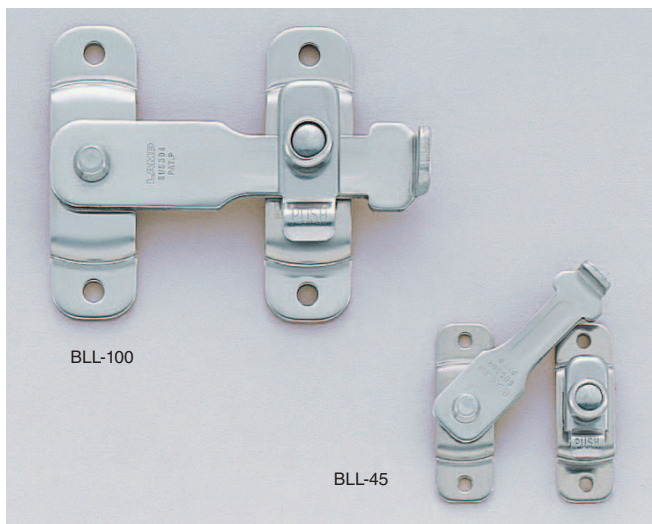
Material	Finish
Stainless Steel(SUS304)	Polished

Item Code	Item Name	A	B	C	D	E	F	G	H ₁	H ₂	H ₃	J	K	L	M	Q	R	S	d ₁	d ₂	t ₁	t ₂	Weight	Box	Carton
140-059-177	SSG-45	45	28	26	14	21	6	7	16	20.5	7.5	22	11	2	8	32	15	22	4.8	4.8	2.0	1.2	65g	20pcs	240pcs
140-059-178	SSG-65	65	40	33	20	29	9	10	21.5	29	10	30	14	4	14	40	18	28	5.9	5.9	2.5	1.5	175g	10pcs	100pcs
140-179-391	SSG-85	85	46	42	26	34	12	10	28	35.5	11	38	21	8	17	48	22	35	6	5.2	3.0	1.5	400g	5pcs	60pcs

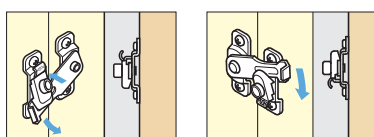
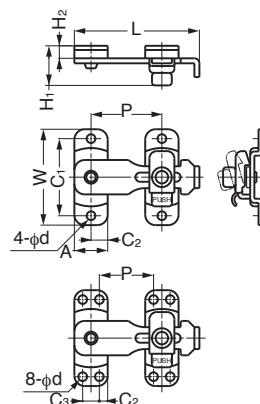
SPRING LOADED BAR LATCH



BLL



- Latch bolt snaps into the strike to prevent accidental release.
- Push tab on strike to release.



Material	Finish
Stainless Steel(SUS304)	Polished

Item Code	Item Name	L	W	A	C ₁	C ₂	C ₃	H ₁	H ₂	P	d	Weight	Box	Carton
140-059-073	BLL-45	48	40	13	32	6.5	-	17	4.5	23±3	3.2	28g	20pcs	400pcs
140-059-074	BLL-60	63	46	16	37	8	-	20	6	34±4	4.2	50g	20pcs	400pcs
140-059-075	BLL-80	85	65	20	53	10	-	22.5	7	47±7	5	100g	10pcs	200pcs
140-059-076	BLL-100	105	80	25	66	12.5	-	26.5	8	59±7	5.5	182g	10pcs	100pcs
140-059-183	BLL-120	127	100	28.5	80	6.75	15	28	8	56±10	5.2	270g	8pcs	80pcs
140-059-184	BLL-150	155	120	30.5	95	7.25	16	28	8	74±14	5.2	350g	6pcs	60pcs

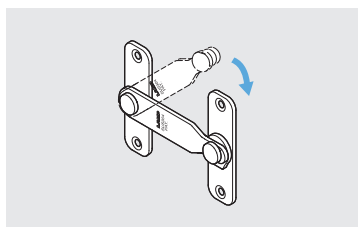
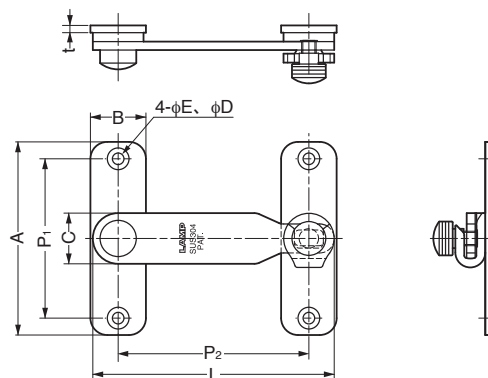
BAR LATCH



BLT



- Thick material ensures durability.
- Thumb screw on bar keeps latch closed.



Material	Finish
Stainless Steel(SUS304)	Mirror

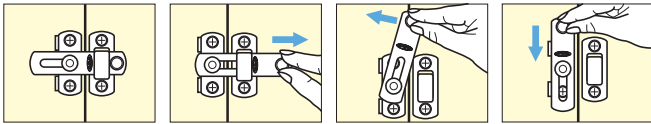
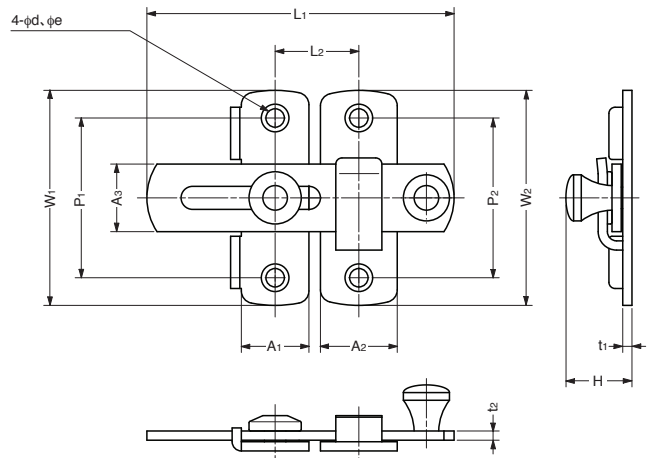
Item Code	Item Name	L	P ₁	P ₂	A	B	C	D	E	t	Weight	Box	Carton
140-050-252	BLT-45	45	30	33	40	14	12	3.5	6	2	31g	20pcs	400pcs
140-050-253	BLT-60	60	37	45	48	17	15	3.8	7.5	2	54g	20pcs	400pcs
140-050-254	BLT-80	80	53	62	65	21	18	4.3	8	3	95g	10pcs	200pcs
140-050-255	BLT-100	100	66	79	80	24	21	4.8	9	3	177g	10pcs	100pcs
140-050-256	BLT-120	120	73	98	90	28	24	5.1	10	4	243g	8pcs	80pcs

BAR LATCH



SSL

- Unique slide-in bar keeps latch locked.
- Slide out and lift the bar to release.



Material	Finish
Stainless Steel(SUS304)	Electro Polished

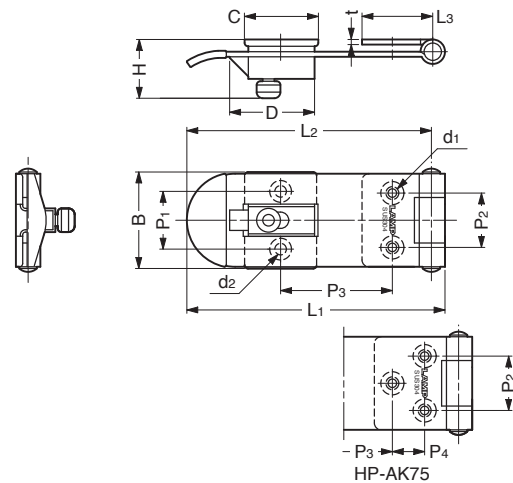
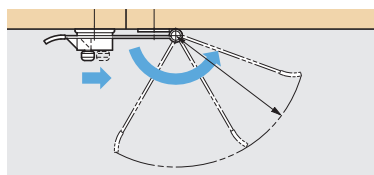
Item Code	Item Name	L ₁	L ₂	W ₁	W ₂	A ₁	A ₂	A ₃	P ₁	P ₂	H	t ₁	t ₂	d	e	Weight	Box	Carton
140-014-008	SSL-50	50	20±4	35	35	13	15	13	26	26	14.5	2	2	4.2	6.2	32g	10pcs	150pcs
140-014-009	SSL-70	70	28±6	50	50	18	20	18	37	37	19	2	2.5	5.2	8	68g	10pcs	150pcs
140-014-010	SSL-100	100	45±15	70	70	22	25	22	52	52	21.5	3	3	5.8	9	142g	5pcs	80pcs

LATCH HASP



HP-AK

- Hasp with built-in latch.
 - Snap on the flap to keep latch closed.
 - Slide the latch knob to release.
- Flap is spring loaded in open direction.
- Plastic cap on end softens the opening sound.



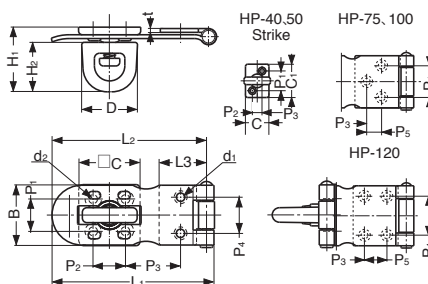
Material	Finish
Stainless Steel(SUS304)	Polished

Item Code	Item Name	L ₁	L ₂	L ₃	B	P ₁	P ₂	P ₃	P ₄	H	C	D	t	d ₁	d ₂	Weight	Box	Carton
140-180-801	HP-AK50	51	48	13	22.2	13.5	12	19	-	16.6	18	20.5	1.2	2-φ3	2-φ3.3	22g	25pcs	250pcs
140-180-802	HP-AK65	66	63	19	24.2	13.5	14	28	-	16.6	18	20.5	1.5	2-φ3.2	2-φ3.3	35g	20pcs	200pcs
140-180-803	HP-AK75	76	72	24.8	27.4	17	16	35	9.5	17.5	21.2	25	1.5	2-φ3.8	2-φ3.4	48g	15pcs	150pcs

STAINLESS STEEL HASP



HP



- Rotating padlock eye allows hasp to stay fastened tight without a padlock.
- Ideal for harsh and high corrosion environments.

Material	Finish
Stainless Steel (SUS304)	Polished

Item Code	Item Name	L ₁	L ₂	L ₃	B	P ₁	P ₂	P ₃	P ₄	P ₅	H ₁	H ₂	C	D	t	d ₁	d ₂	Weight	Box	Carton
140-050-224	HP40	40	37	13	22	13	6.4	10.8	12	-	22	17.9	15.3	17.7	1.2	2- ϕ 3	2- ϕ 3	21.5g	30pcs	300pcs
140-050-225	HP50	50	47	13	22.3	13	9	16	12	-	22	17.9	18.3	17.7	1.2	2- ϕ 3	2- ϕ 3	24g	25pcs	250pcs
140-050-226	HP65	65	62	19	24	13	13	21.5	14	-	24.5	20.4	24.5	22.5	1.5	2- ϕ 3.2	4- ϕ 3.2	41.5g	20pcs	200pcs
140-050-227	HP75	75	72	24.8	27	15	15	25.7	16	9.5	27.4	22	27.8	23.2	1.5	3- ϕ 3.8	4- ϕ 3.8	51.5g	15pcs	150pcs
140-050-228	HP100	100	95	30	35.5	19	19	29	21	10	32.2	27.9	35.5	31	2	3- ϕ 4	4- ϕ 4.5	118.5g	10pcs	100pcs
140-050-229	HP120	120	115	35.5	40	21	22	38	26	15	34.8	27.9	40.5	31	2.5	4- ϕ 5.2	4- ϕ 5.2	172g	8pcs	80pcs

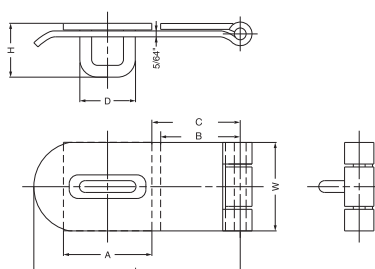
WELD-ON STAINLESS STEEL HASP



HP-635, 645, 660



- Ideal for harsh and high corrosion environments.



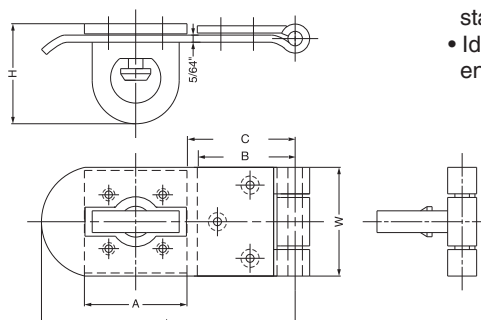
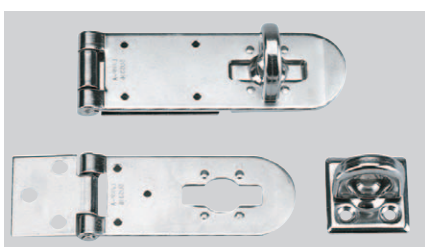
Material	Finish
Stainless Steel(SUS316)	Electro Polished

Item Code	Item Name	L	W	A	B	C	D	H	Weight	Box	Carton
140-039-602	HP-635	88.9	38.1	38.1	33.3	41.3	23.8	20.6	110g	25pcs	200pcs
140-039-601	HP-645	114.3	38.1	38.1	57.2	64.3	23.8	20.6	173g	20pcs	160pcs
140-039-600	HP-660	152.4	50.8	38.1	69.9	100.4	23.8	20.6	290g	10pcs	100pcs

STAINLESS STEEL HASP



HP-635S, 645S, 660S



- Rotating padlock eye allows hasp to stay fastened tight without a padlock.
- Ideal for harsh and high corrosion environments.

Material	Finish
Stainless Steel(SUS316)	Electro Polished

Item Code	Item Name	L	W	A	B	C	H	Weight	Box	Carton
140-039-603	HP-635S	88.9	38.1	38.1	33.3	40.5	34.9	130g	25pcs	200pcs
140-039-604	HP-645S	114.3	38.1	38.1	57.2	61.9	34.9	184g	20pcs	160pcs
140-039-605	HP-660S	152.4	50.8	38.1	69.9	98.4	34.9	302g	10pcs	100pcs

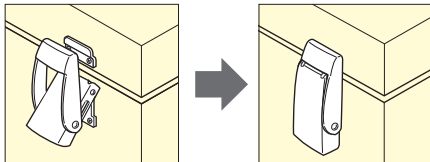
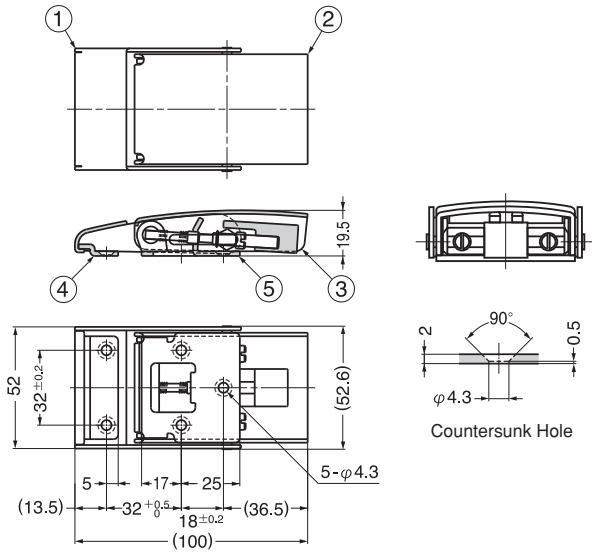
DRAW LATCH (W/SAFETY LOCK)



STF100



- With safety lock to prevent accidental release.
- Push safety button and lift to release.



No.	Part Name	Material	Finish/Color
①	Body A	Stainless Steel(SUS304)	Satin
②	Body B	Stainless Steel(SUS304)	Satin
③	Push lever	Rubber	Black
④	Strike	Stainless Steel(SUS304)	Satin
⑤	Mounting Plate	Stainless Steel(SUS304)	Polished

Item Code	Item Name	Load Capacity	Weight	Box	Carton
120-044-024	STF100	784N 80kgf	190g	6pcs	120pcs

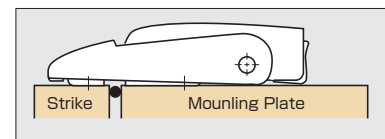
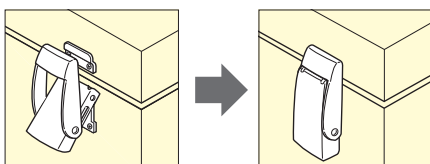
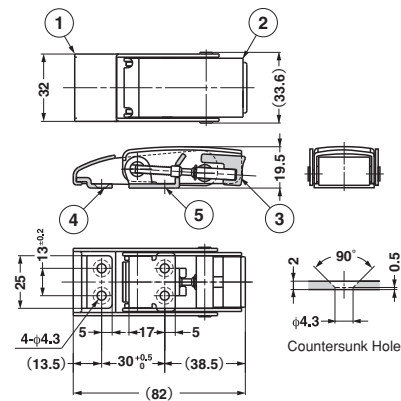
DRAW LATCH (W/SAFETY LOCK)



STF82L



- With safety lock to prevent accidental release.
- Push safety button and lift to release.



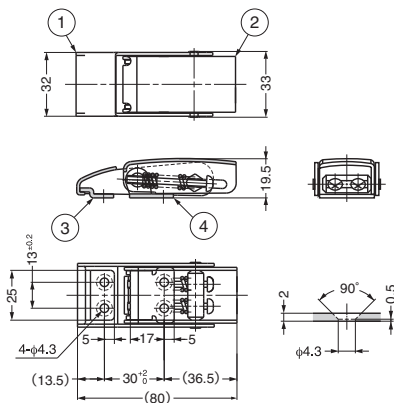
No.	Part Name	Material	Finish/Color
①	Body A	Stainless Steel(SUS304)	Satin
②	Body B	Stainless Steel(SUS304)	Satin
③	Push lever	Rubber	Black
④	Strike	Stainless Steel(SUS304)	Satin
⑤	Mounting Plate	Stainless Steel(SUS304)	Polished

Item Code	Item Name	Load Capacity	Weight	Box	Carton
120-913-101	STF82L	784N 80kgf	111g	12pcs	180pcs

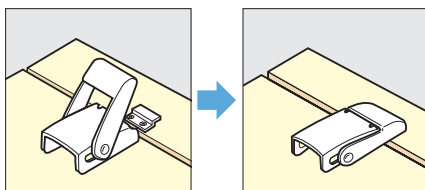
DRAW LATCH (SPRING LOADED)



STF80



- Spring Loaded latch provides constant holding tension for secure latching.
- Durable against vibration.



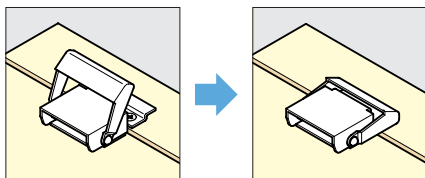
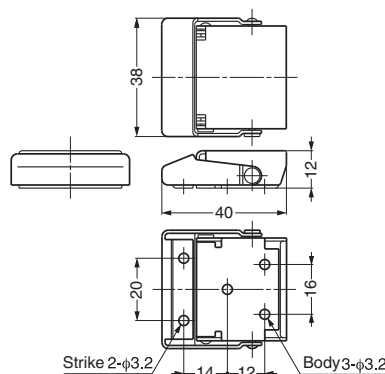
No.	Part Name	Material	Finish
①	Body A	Stainless Steel(SUS304)	Satin
②	Body B	Stainless Steel(SUS304)	Satin
③	Strike	Stainless Steel(SUS304)	Satin
④	Mounting Plate	Stainless Steel(SUS304)	Polished

Item Code	Item Name	Load Capacity	Weight	Box	Carton
120-914-490	STF80	784N	80kgf	110g	12pcs / 180pcs

DRAW LATCH



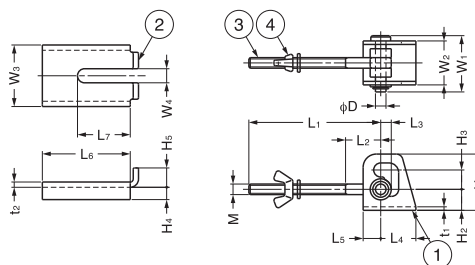
STF40



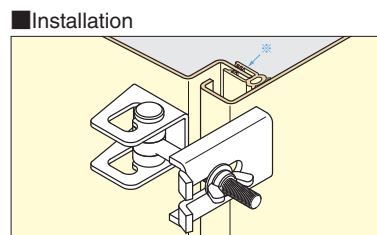
Item Code	Item Name	Material	Finish	Weight	Box	Carton
120-044-025	STF40	Stainless Steel(SUS304)	Polished	30g	30pcs	300pcs

ADJUSTABLE DRAW LATCH

CHN



- Exposed threaded rod allows adjustment of latching distance.



No.	Part Name	Material	Finish
①	Body	Stainless Steel(SUS304)	Bead Blasting
		Steel	Yellow Zinc Chromate
②	Counter plate	Stainless Steel(SUS304)	Bead Blasting
		Steel	Yellow Zinc Chromate
③	Bolt	Stainless Steel(SUS304)	Plain
④	Nut	Stainless Steel(SUS304)	Plain

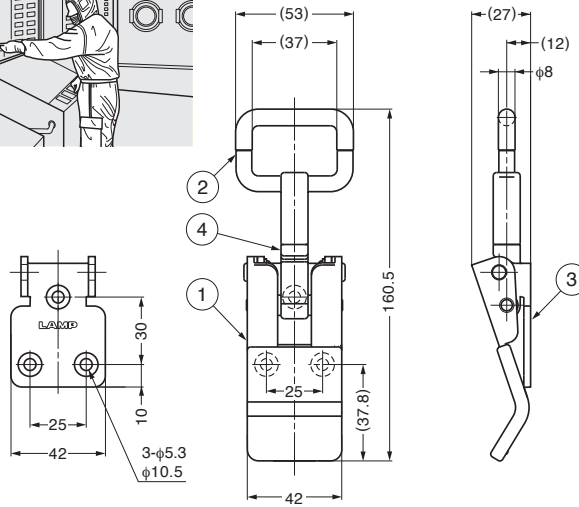
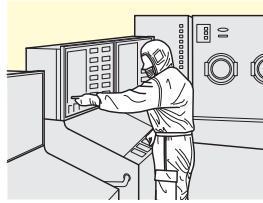
Item Code	Item Name	Spec.	L ₁	L ₂	L ₃	L ₄	L ₅	L ₆	L ₇	W ₁	W ₂	W ₃	W ₄	H ₁	H ₂	H ₃	H ₄	H ₅	t ₁	t ₂	φD	M	Weight
120-049-349	CHN-75S	Stainless Steel	75	20	6	20	10	50	30	31.5	25	35	8	32	12	11	10	8	2	3	6	M6	125g
120-049-348	CHN-80S	Stainless Steel	80	25	8	25	13	60	40	37.5	30	40	10	40	15	14	12	8	2	3	8	M8	225g
120-049-347	CHN-90S	Stainless Steel	90	30	10	30	15	75	50	45	35	45	12	50	20	17	14	10	3	4	10	M10	390g
120-039-406	CHN-75Y	Steel	75	20	6	20	10	50	30	31.5	25	35	8	32	12	11	10	8	2.3	3.2	6	M6	125g
120-039-405	CHN-80Y	Steel	80	25	8	25	13	60	40	37.5	30	40	10	40	15	14	12	8	2.3	4	8	M8	225g
120-039-404	CHN-90Y	Steel	90	30	10	30	15	75	50	45	35	45	12	50	20	17	14	10	3	4	10	M10	390g

DRAW LATCH (CLEAN ROOM)

LOAD CAPACITY
330kgf

STAINLESS
316
STEEL

STF-CV150



- No metal-to-metal contact.
- Ideal for clean room, semiconductor, and food industry applications.
- When used in combination with the TF40C counter plate (below) will have 300kg load capacity.

Hook (Option)

Item Code	Item Name	Finish
120-014-142	TF40C-ST	Polished
120-014-143	TF40C-STM	Mirror

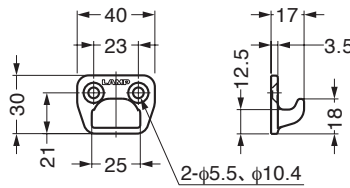
Body

Item Code	Item Name	Material	Finish	Load Capacity	Weight
120-040-481	STF-CV150	Stainless Steel(SUS316)	Mirror	3300N 330kgf	248g
120-014-141	STF-CV150M	Stainless Steel(SUS316)	Mirror	3300N 330kgf	248g

No.	Part Name	Material	Finish
①	Handle	Stainless Steel(SUS316)	Mirror
②	Hook	Stainless Steel(SCS14)	Mirror
③	Base	Stainless Steel(SUS316)	Mirror
④	Hook Screw	Stainless Steel(SCS14)	Mirror

HEAVY DUTY COUNTERPLATE

TF40C



- Heavy duty counterplate for STF-CV150 clean room draw latch.

Item Code	Item Name	Material	Finish	Weight
120-014-142	TF40C-ST	Stainless Steel (SCS14)	Polished	48g
120-014-143	TF40C-STM	Stainless Steel (SCS14)	Mirror	48g

CLEAN MAGNETIC CATCHES DIGEST

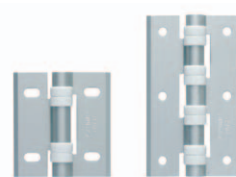


MC-JM45WT

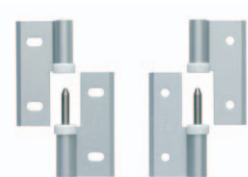


MC-JM63G

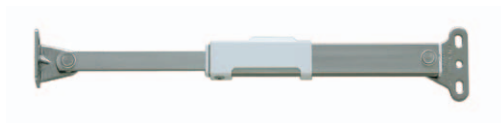
CLEAN HINGES & STAY DIGEST



HG-CV



HG-CV-65N

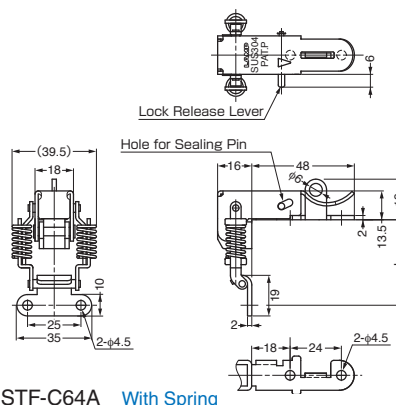
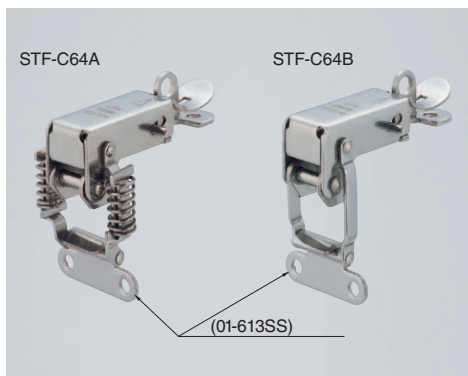


LB-CV215A

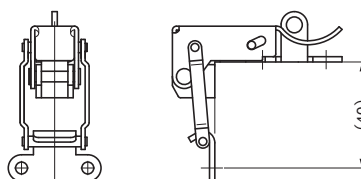
CORNER FASTENER (W/LOCK)



STF-C64A, B



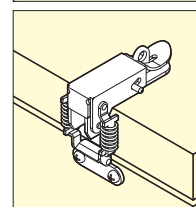
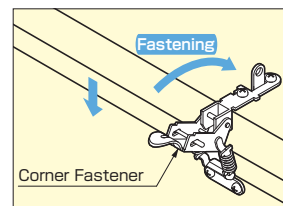
STF-C64A With Spring



STF-C64B Without Spring

- Latch mounts on corner to draw perpendicular surfaces together.
- Designed to allow front operation.
- Padlock and secondary catch options.
- Pull lever and lift latch to open.
- Available with or without spring.

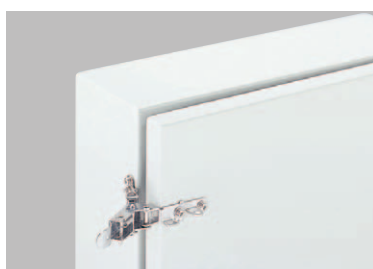
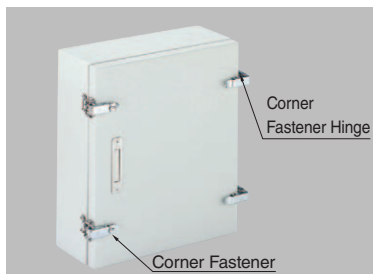
LSize mm±0.5	Clamping Force N±14	Clamping Force kgf±1.5
40	0N±14	0kgf±1.5
41	58.6N±14	6.0kgf±1.5
42	71.3N±14	7.3kgf±1.5
43	83.9N±14	8.6kgf±1.5
44	96.5N±14	9.9kgf±1.5



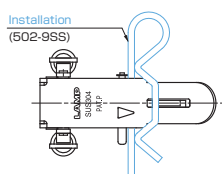
Body

Item Code	Item Name	Spec.	Material	Finish	Door Thickness	Weight	Box	Carton
120-042-200	STF-C64A	With Spring	Stainless Steel(SUS304)	Mirror	14~ 28	66.5g	15pcs	210pcs
120-042-201	STF-C64B	Without Spring	Stainless Steel(SUS304)	Mirror	14~ 28	60g	15pcs	210pcs

Installation

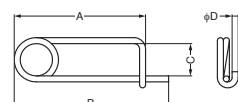


Sealing Pin(Optional)

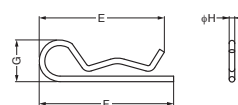


Material	Finish
Stainless Steel(SUS304)	Plain

Item Code	Item Name	A	B	C	φD
120-041-822	502-7SS	38	43	13	1.8

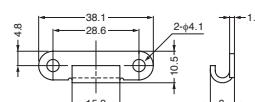


Item Code	Item Name	E	F	G	φH
120-041-823	502-9SS	63	66	18	2.6
120-041-825	613-9SS	55	59	15	2.3

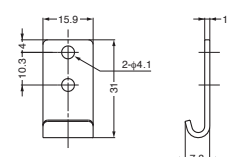


Strike Hook (Option)

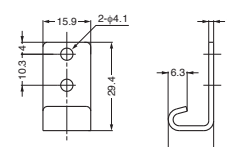
Item Code	Item Name	Material	Finish
120-040-415	01-613SS	Stainless Steel(SUS304)	Polished



Item Code	Item Name	Material	Finish
120-040-421	02-613SS	Stainless Steel(SUS304)	Polished



Item Code	Item Name	Material	Finish
120-040-452	07-613SS	Stainless Steel(SUS304)	Polished



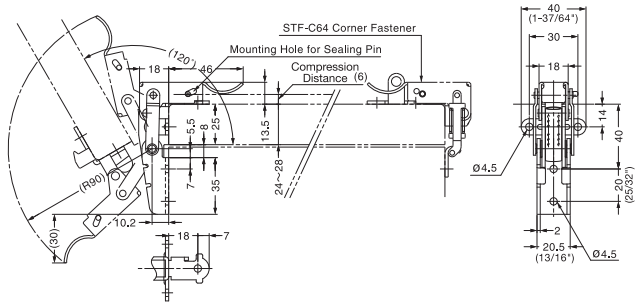
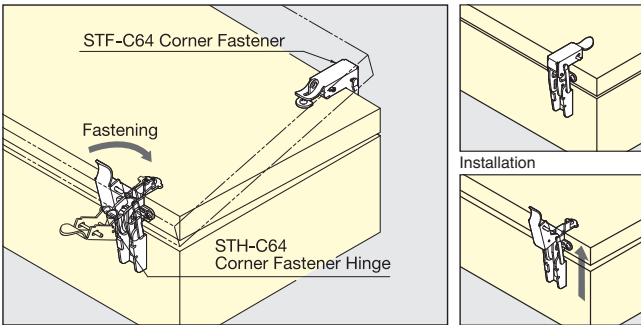
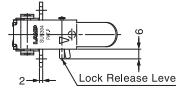
CORNER FASTENER HINGE (W/LOCK)



STH-C64



- Compresses cover to achieve better sealing.
 - Works with STF-C64 fastener.
 - To be used with rubber gasket.
 - Designed to allow front operation.
 - Locks when fastened to prevent accidental release.
 - Pull lever and lift latch to open.
- Door size: W300 x H400 /pair
 Door thickness: t = 24mm ~ 28mm
 Door weight: Max. 2.8 kg (6.1 lbs) /pair



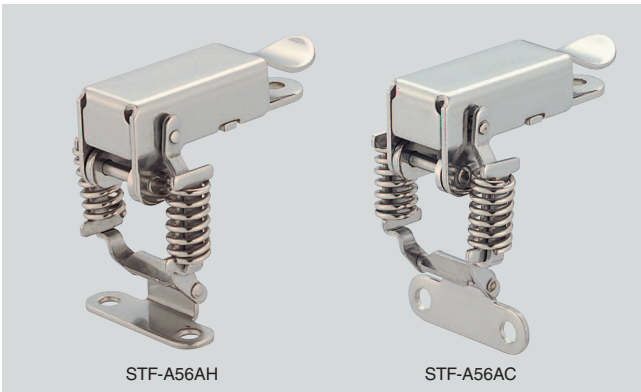
Item Code	Item Name	Weight (g)	Box (pcs)	Carton (pcs)
120-091-430	STH-C64	90	10	140

Material	Finish
304 Stainless Steel	Polished

CORNER FASTENER

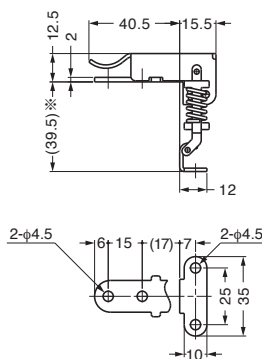


STF-A56AH, AC



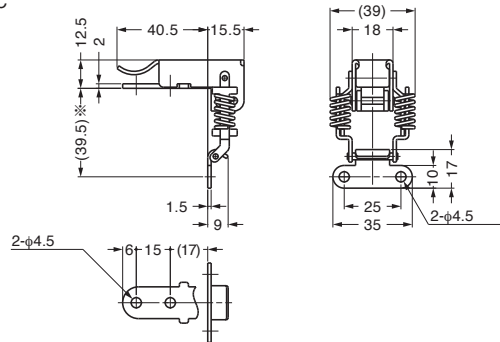
- Latch mounts on corner to draw perpendicular surfaces together.
- Designed to allow front operation.
- Available in two different counter plate styles.
- Provides constant holding tension for secure latching.

STF-A56AH



Dimension shown is in case of clamping force"0".

STF-A56AC



Dimension shown is in case of clamping force"0".

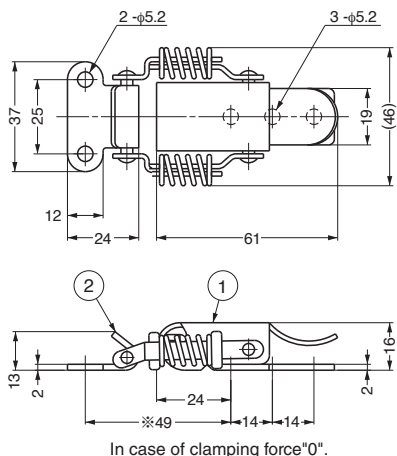
Item Code	Item Name	Material	Finish
120-040-480	STF-A56AH	Stainless Steel(SUS304)	Mirror

Item Code	Item Name	Material	Finish
120-040-479	STF-A56AC	Stainless Steel(SUS304)	Mirror

COMPRESSION DRAW LATCH



SCC-60



- Spring loaded design compensates for tolerance and vibrations.
- Provides constant hold tension for secure latching.

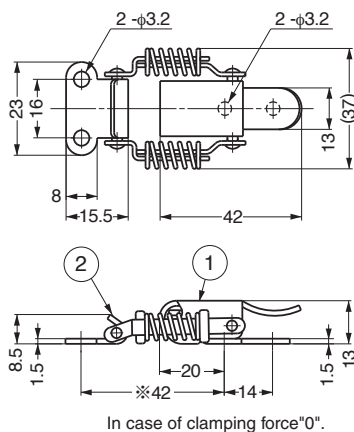
No.	Part Name	Material	Finish
①	Body	Stainless Steel(SUS304)	Polished
②	Strike	Stainless Steel(SUS304)	Polished

Item Code	Item Name
120-043-981	SCC-60

COMPRESSION DRAW LATCH



SCC-40



- Spring loaded design compensates for tolerance and vibrations.
- Provides constant hold tension for secure latching.

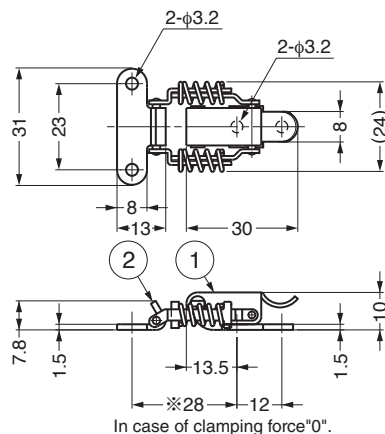
No.	Part Name	Material	Finish
①	Body	Stainless Steel(SUS304)	Polished
②	Strike	Stainless Steel(SUS304)	Polished

Item Code	Item Name
120-043-980	SCC-40

COMPRESSION DRAW LATCH



SCC-30



- Spring loaded design compensates for tolerance and vibrations.
- Provides constant hold tension for secure latching.

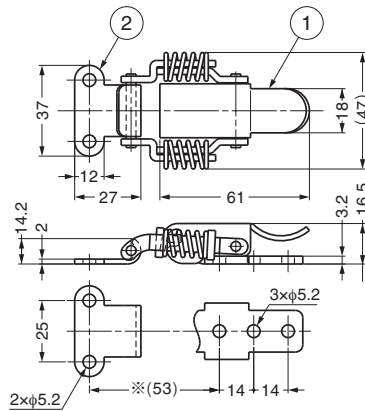
No.	Part Name	Material	Finish
①	Body	Stainless Steel(SUS304)	Polished
②	Strike	Stainless Steel(SUS304)	Polished

Item Code	Item Name
120-040-693	SCC-30

COMPRESSION DRAW LATCH



SCCA-60



※Dimension shown is in case of clamping force"0".

- Spring loaded design compensates for tolerance and vibrations.
- Provides constant hold tension for secure latching.

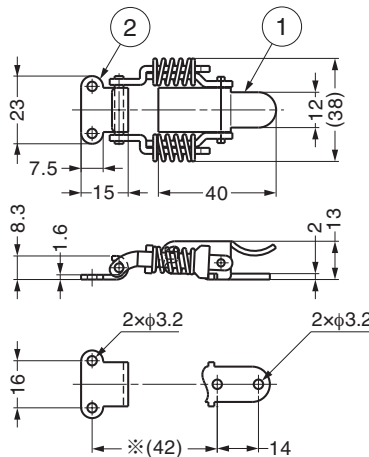
No.	Part Name	Material	Finish
①	Body	Steel	Clear Zinc Chromate
②	Counter Plate	Steel	Clear Zinc Chromate

Item Code	Item Name	Weight
120-049-303	SCCA-60	102g

COMPRESSION DRAW LATCH



SCCA-40



※Dimension shown is in case of clamping force"0".

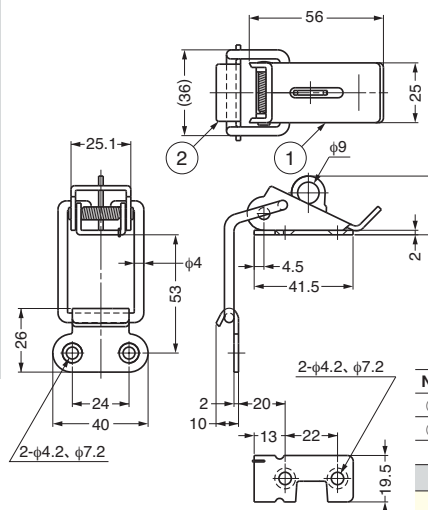
- Spring loaded design compensates for tolerance and vibrations.
- Provides constant hold tension for secure latching.

No.	Part Name	Material	Finish
①	Body	Steel	Clear Zinc Chromate
②	Counter Plate	Steel	Clear Zinc Chromate

Item Code	Item Name	Weight
120-049-179	SCCA-40	38g

CORNER FASTENER

PS34A



- Latch mounts on corner to draw perpendicular surfaces together.
- Designed to allow front operation.
- Padlock and secondary catch options.

No.	Part Name	Material	Finish
①	Body	Stainless Steel(SUS304)	Polished
②	Counterplate	Stainless Steel(SUS304)	Polished

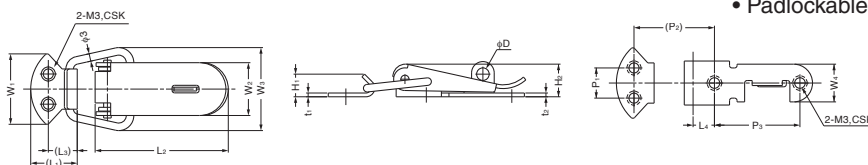
Item Code	Item Name	※ Tension Force	Weight
120-049-193	PS34A	147N	15kgf 88g

※Dimension shown is in case of clamping force"0".

DRAW LATCH



PS



Item Code	Item Name	Type	L ₁	L ₂	L ₃	L ₄	W ₁	W ₂	W ₃	W ₄	H ₁	H ₂	t ₁	t ₂	P ₁	(P ₂)	P ₃	Ø D	Tension Force	
120-040-476	PS31A	With Pad Lock Hole	16	40	10	8	23	16	26	13	9	9.5	1.2	1	10	30	23	5	98N	10kgf
120-040-475	PS30A	With Pad Lock Hole	18	53	11.5	8.5	28	21	32	15	10	13	1.5	1.5	12	33	34	5.5	147N	15kgf
120-049-188	PS31	Without Pad Lock Hole	19	38	11	7	24	16	26	13	8	9.5	1.2	1	10	30	23	-	98N	10kgf
120-049-671	PS30	Without Pad Lock Hole	18	53	11.5	8.5	28	21	32	15	10	13	1.5	1.5	12	33	34	-	147N	15kgf

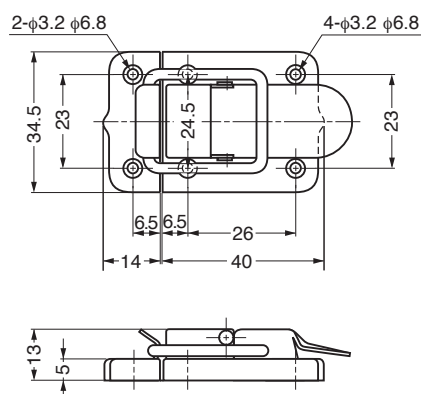
Material	Finish
Stainless Steel(SUS304)	Polished

Material	Finish
Brass	Chrome

Item Code	Item Name	Type	L ₁	L ₂	L ₃	L ₄	W ₁	W ₂	W ₃	W ₄	H ₁	H ₂	t ₁	t ₂	P ₁	(P ₂)	P ₃	Ø D	Tension Force	
120-049-313	P31A	With Pad Lock Hole	16	40	9.5	8	24	16	27.5	13	9	9	1.2	1	10	29	23	5	78N	8kgf
120-049-311	P30A	With Pad Lock Hole	18.5	53	11.5	9	28	21	33	15	9	13	1.5	1.5	12	32	34	5.2	98N	10kgf
120-049-314	P31	Without Pad Lock Hole	16	40	9.5	8	24	16	27.5	13	9	9	1.2	1	10	29	23	-	78N	8kgf
120-049-312	P30	Without Pad Lock Hole	18.5	53	11.5	9	28	21	33	15	9	13	1.5	1.5	12	32	34	-	98N	10kgf

DRAW LATCH

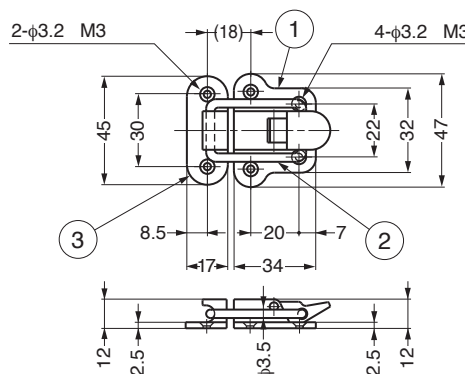
P3



Item Code	Item Name	Material	Finish	Weight	Box
120-049-395	P3	Steel	Nickel	29.3g	100pcs

DRAW LATCH

P3-10N



●Dimensions shown in case of clamping force"0".

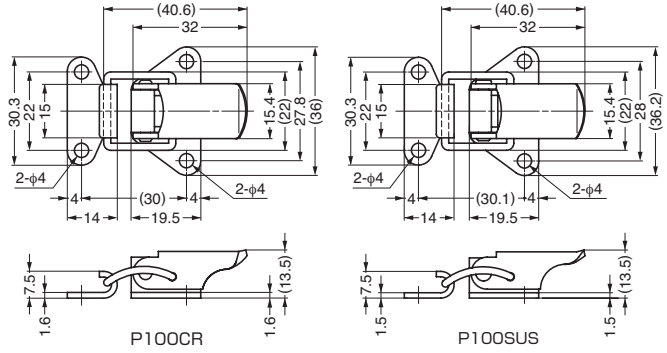
Item Code	Item Name	※ Tension Force	Weight
120-049-125	P3-10N	147N	15kgf

No.	Part Name	Material	Finish
①	Body	Zinc Alloy	Chrome
②	Hook	Stainless Steel(SUS304)	Plain
③	Counterplate	Zinc Alloy	Chrome

DRAW LATCH

STAINLESS 304 STEEL

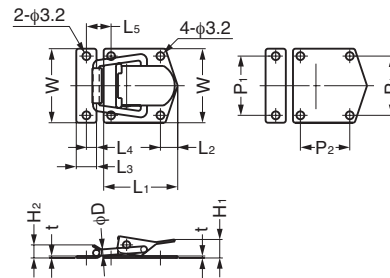
P100



Item Code	Item Name	Material	Finish	Weight	Box
120-041-058	P100CR	Steel	Chrome	24g	100pcs
120-044-003	P100SUS	Stainless Steel(SUS304)	-	22.5g	100pcs

DRAW LATCH

P3-12,P3-11

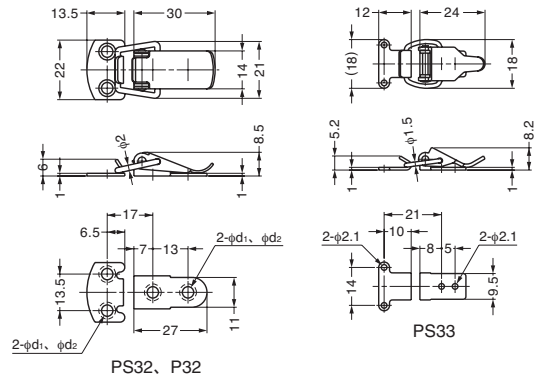


Item Code	Item Name	Material	Finish	L ₁	L ₂	L ₃	L ₄	(L ₅)	W	H ₁	H ₂	t	P1	P2	φ D	*Tension Force	Weight	
120-049-317	P3-12	Brass	Chrome	30	7	8	4	10	30	9.5	5	0.8	24	20	2.5	49N	5kgf	15g
120-049-316	P3-11	Brass	Chrome	40	10	11	5.5	14	37	12	8	1.2	29	25	3	78N	8kgf	30g

DRAW LATCH

STAINLESS 304 STEEL

PS, P



Item Code	Item Name	Material	Finish	Tension Force	Weight
120-049-672	PS33	Stainless Steel(SUS304)	Polished	49N	5kgf 6g

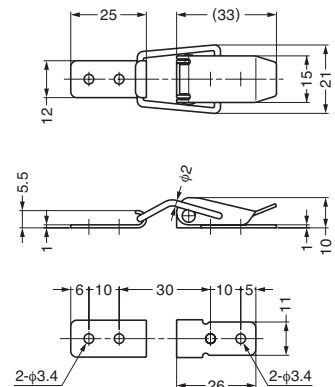
Item Code	Item Name	Material	Finish	L ₁	φ d ₂	Tension Force	Weight
120-059-452	PS32	Stainless Steel(SUS304)	Polished	7.5	5.2	78N	8kgf 11g
120-049-318	P32	Steel	Chrome	7.5	4.2	78N	8kgf 12g

DRAW LATCH

RoHS 4+

STAINLESS 304 STEEL

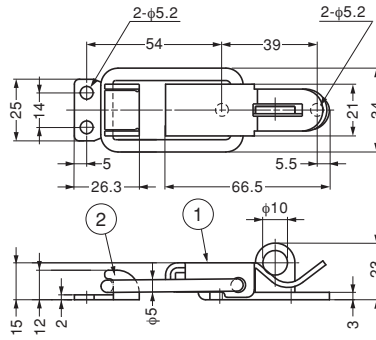
PS35



Item Code	Item Name	Material	Finish	Tension Force	Weight	Box
120-049-345	PS35	Stainless Steel(SUS304)	Polished	19N	2kgf	15g 500pcs

FASTENER

P34



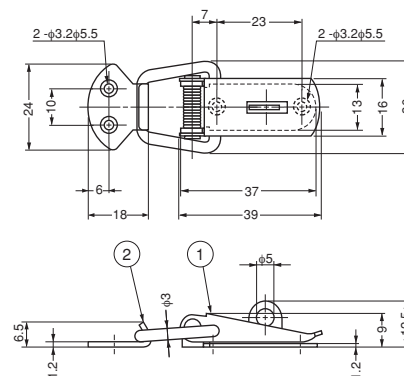
- M5 pan head screw with cross hole.

No.	Part Name	Material	Finish
①	Body	Steel	Yellow Zinc Chromate
②	Counterplate	Steel	Yellow Zinc Chromate

Item Code	Item Name	Weight
120-049-015	P34	89g

FASTENER

P11



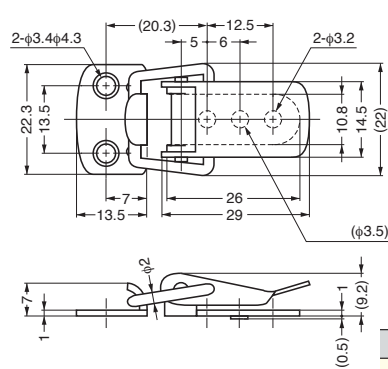
- Lever spring avoid lever to move during opening/fastening.

No.	Part Name	Finish
①	Body	Chrome
②	Counter Plate	Chrome

Item Code	Item Name	Material	Weight	Box
120-044-004	P11	Steel	17.3g	200pcs

FASTENER

P8

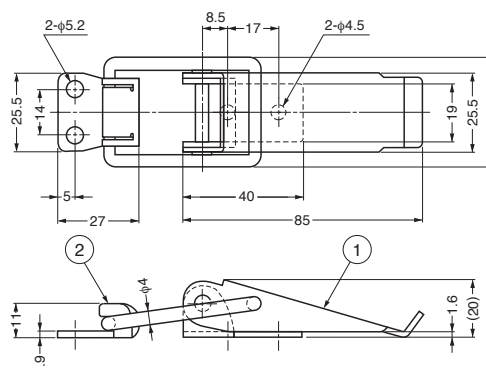


- Lever spring avoid lever to move during opening/fastening.

Item Code	Item Name	Material	Finish	Weight	Box
120-048-025	P8	Steel	Chrome	10.2g	250pcs

FASTENER

P91



No.	Part Name	Material	Finish
①	Body	Steel	Clear Zinc Chromate
②	Counter Plate	Steel	Clear Zinc Chromate

Item Code	Item Name	Weight	Box
120-040-507	P91	79g	100pcs

DRAW LATCH (W/HANDLE)

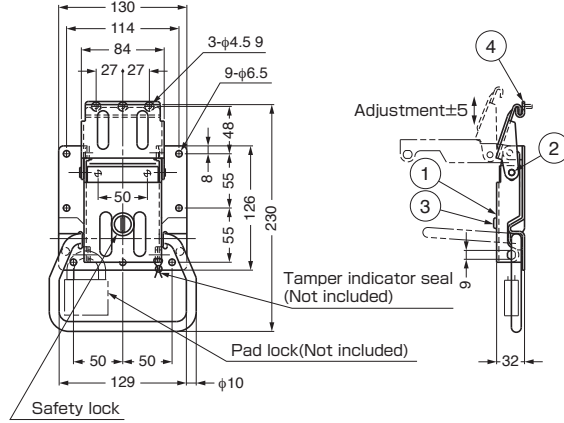
LOAD CAPACITY
100 kgf

NO SCREW

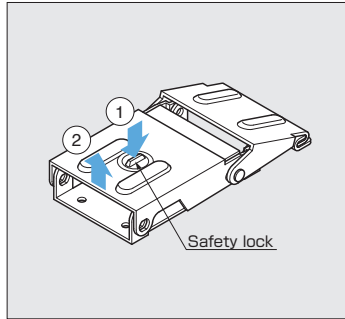
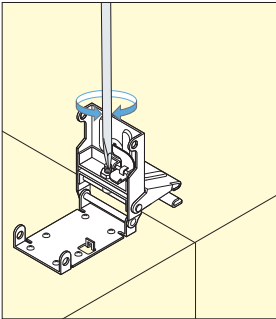
THF-100



- With handle and safety lever.
- Push safety lever and lift latch to open.
- Spring loaded to hold handle in retracted position.
- Includes a function to allow use for pad lock or tamper indicator seals. (Pad lock and wire not included)



Adjustment



No.	Part Name	Material	Finish
①	Body	Steel	Yellow Zinc Chromate
②	Shaft	Stainless Steel(SUS304)	—
③	Safety Lever	Stainless Steel(SUS304)	—
④	Strike	Steel	Yellow Zinc Chromate

Item Code	Item Name	Load Capacity	Weight	Carton
120-040-506	THF-100	980N 100kgf	1064g	10pcs

DRAW LATCH

TEST

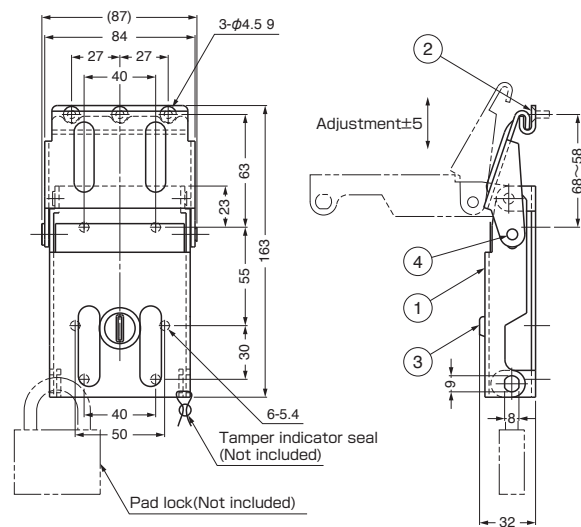
LOAD CAPACITY
75 kgf

NO SCREW

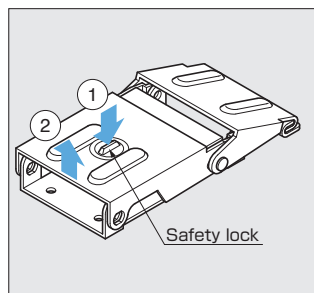
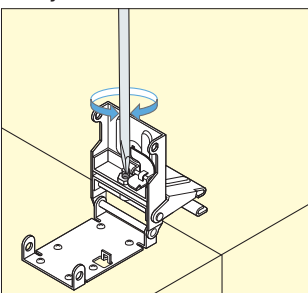
THF-75



- Safety lever prevents accidental release.
- Push the safety lever and lift latch to open.
- Includes a function to allow use for pad lock or tamper indicator seals. (Pad lock and wire not included)



Adjustment



No.	Part Name	Material	Finish
①	Body	Steel	Yellow Zinc Chromate
②	Shaft	Stainless Steel(SUS304)	—
③	Safety Lever	Stainless Steel(SUS304)	—
④	Strike	Steel	Yellow Zinc Chromate

Item Code	Item Name	Load Capacity	Weight	Carton
120-040-505	THF-75	730N 75kgf	657g	20pcs

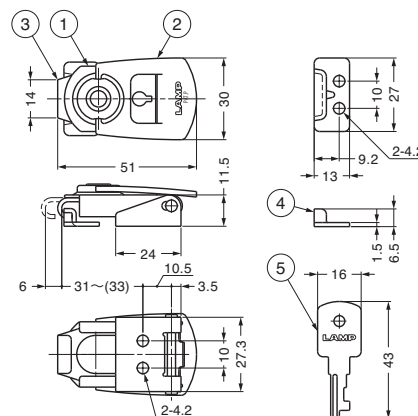
MINI DRAW LATCH



PN-51



- Lift handle and turn 180° open and close latch.
 - Small stainless draw latch with key.
- Note: key changes are not available.



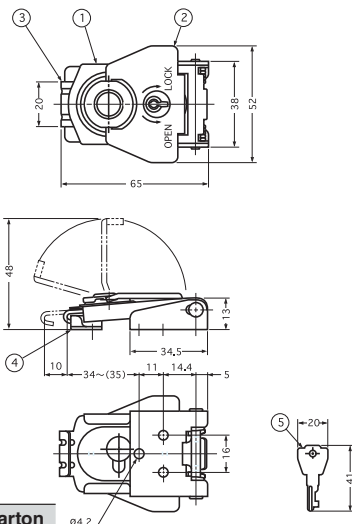
No.	Part Name	Material	Finish
①、②	Body, Lever	Stainless Steel(SUS304)	Plain
③	Hook	Stainless Steel(SUS304)	Plain
④	Counter plate	Stainless Steel(SUS304)	Plain
⑤	Key	Steel	Nickel

Item Code	Item Name	Weight	Box
120-040-489	PN-51	50g	40pcs

DRAW LATCH



P-1040/SS



- Lift handle and turn 180° open and close latch.
 - Stainless draw latch with key.
- Note: key changes are not available.

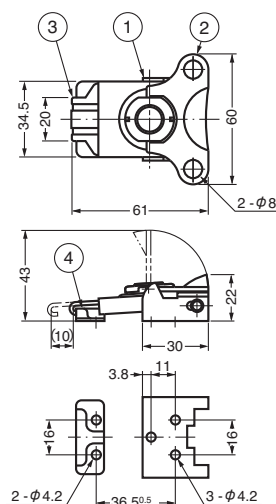
Item Code	Item Name	Weight	Box	Carton
120-049-413	P-1040/SS	105g	60pcs	240pcs

No.	Part Name	Material	Finish
①	Body	304 Stainless Steel	Polished
②	Lever		
③	Hook	430 Stainless Steel	
④	Counterplate	304 Stainless Steel	
⑤	Key	Steel	Nickel

DRAW LATCH



P-102H/SS



- Lift handle and turn 180° open and close latch.

Item Code	Item Name	Weight	Box	Carton
120-049-234	P-102H/SS	85g	60pcs	600pcs

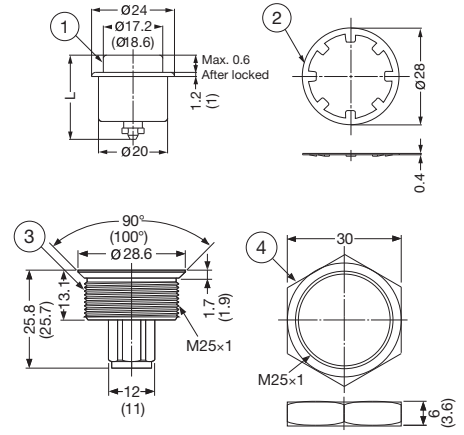
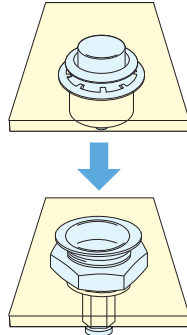
No.	Part Name	Material	Finish
①	Body	304 Stainless Steel	Polished
②	Lever		
③	Hook	430 Stainless Steel	
④	Counterplate	304 Stainless Steel	

PUSH LOCK FASTENER (LARGE/FLUSH TYPE)

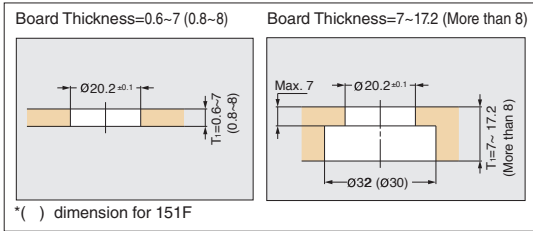
251F, 151F



- 2 piece fastener allows for fast and easy access with complete removal of panel.
 - Attach socket into outer panel / plug into removable panel.
 - Insert plug into socket and push to lock / unlock.
- Flush locked design prevents snagging.
- Fastens plastic or sheet metal panels.

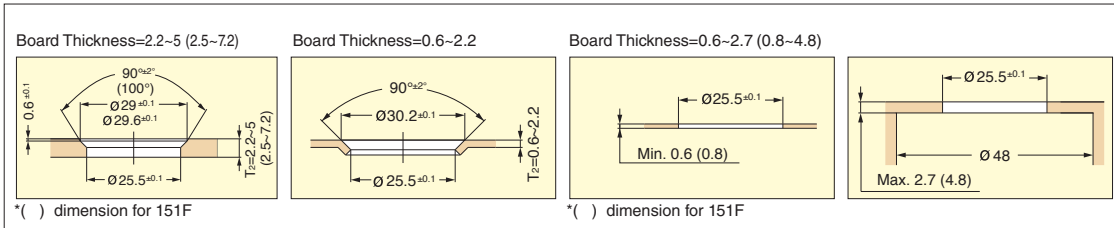


Preparation (Plug)



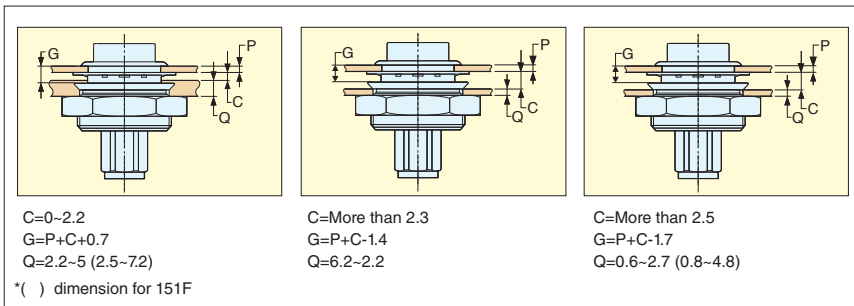
*() dimension for 151F

Preparation (Socket)



*() dimension for 151F

Grip Dimensions



*() dimension for 151F

251F

Item Code	Set Item Name	Grip Dimension G	Plug Dimension L	Retaining Force	Weight
120-040-259	251F-01-3	1.2~ 2	20.5	245N 25kgf	15g
120-040-260	251F-02-3	2~ 2.8	21	245N 25kgf	15g
120-040-261	251F-03-3	2.8~ 3.6	22	245N 25kgf	15g
120-040-262	251F-04-3	3.6~ 4.4	23	245N 25kgf	15g
120-040-263	251F-05-3	4.4~ 5.2	23.5	245N 25kgf	15g
120-040-264	251F-06-3	5.2~ 6	24.5	245N 25kgf	16g

No.	Part Name	Material	Finish
①	Plug	Polyacetal	Black
②	Ring	Steel	Black
③	Socket	Polyacetal	Black
④	Nut	Polyacetal	Black

151F

Item Code	Set Item Name	Grip Dimension G	Plug Dimension L	Retaining Force	Weight
120-013-718	151F-01-2	1.2~ 2	20.5	245N 25kgf	15g
120-013-719	151F-02-2	2~ 2.8	21	245N 25kgf	15g
120-013-720	151F-03-2	2.8~ 3.6	22	245N 25kgf	15g
120-013-721	151F-04-2	3.6~ 4.4	23	245N 25kgf	15g
120-013-722	151F-05-2	4.4~ 5.2	23.5	245N 25kgf	15g
120-013-723	151F-06-2	5.2~ 6	24.5	245N 25kgf	16g

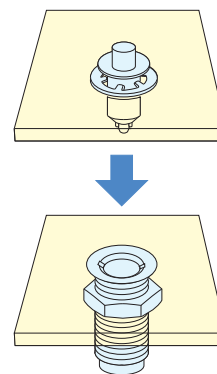
No.	Part Name	Material	Finish
①	Plug	Brass	Chrome
②	Ring	Steel	Black
③	Socket	Brass	Nickel
④	Nut	Zinc Alloy	Nickel

PUSH LOCK FASTENER (MINI/FLUSH TYPE)

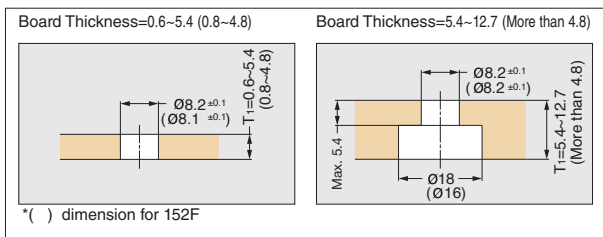
252F, 152F



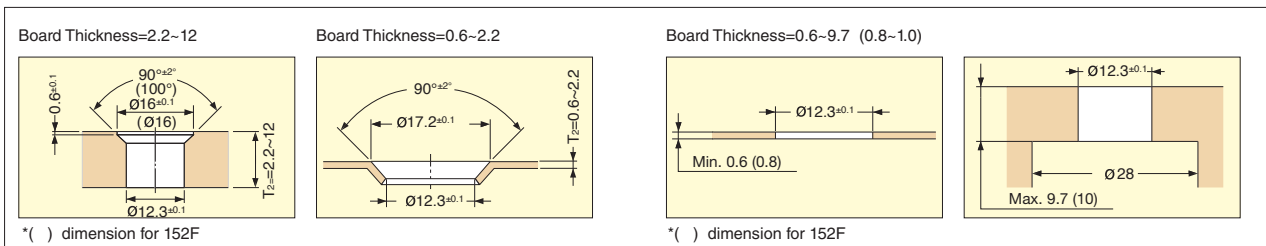
- 2 piece fastener allows for fast and easy access with complete removal of panel.
 - Attach socket into outer panel / plug into removable panel.
 - Insert plug into socket and push to lock / unlock.
- Flush locked design prevents snagging.
- Fastens plastic or sheet metal panels.



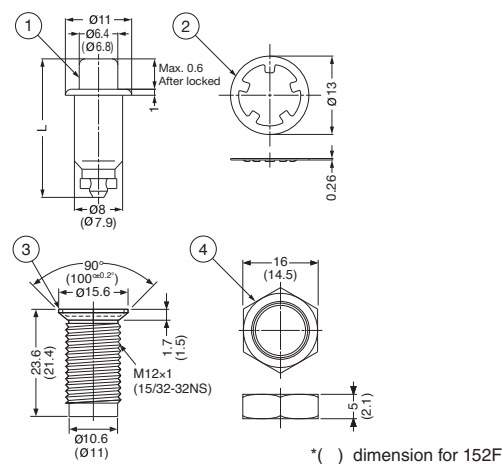
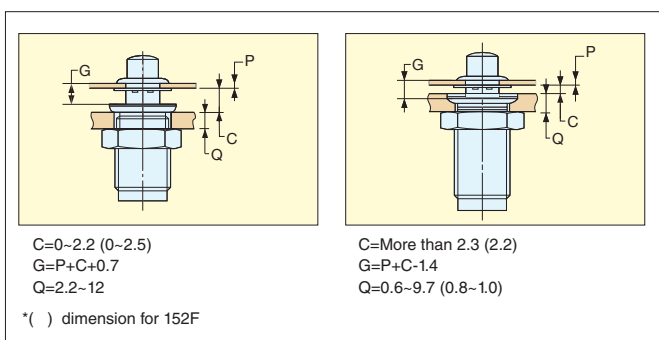
Preparation (Plug)



Preparation (Socket)



Grip Dimensions



252F

Item Code	Set Item Name	Grip DimensionG	Plug DimensionL	Retaining Force	Weight
120-040-279	252F-01-3	1.2~ 2	18.5	147N 15kgf	6g
120-040-280	252F-02-3	2~ 2.8	19.0	147N 15kgf	6g
120-040-281	252F-03-3	2.8~ 3.6	20	147N 15kgf	6g
120-040-282	252F-04-3	3.6~ 4.4	20.5	147N 15kgf	6g
120-040-283	252F-05-3	4.4~ 5.2	21.5	147N 15kgf	6g
120-040-284	252F-06-3	5.2~ 6	22.5	147N 15kgf	6g

No.	Part Name	Material	Finish
①	Plug	Polyacetal	Black
②	Ring	Steel	Black
③	Socket	Polyacetal	Black
④	Nut	Polyacetal	Black

152F

Item Code	Set Item Name	Grip DimensionG	Plug DimensionL	Retaining Force	Weight
120-013-709	152F-01-1	1.2~ 2	18.5	147N 15kgf	6g
120-013-710	152F-02-1	2~ 2.8	19	147N 15kgf	6g
120-013-711	152F-03-1	2.8~ 3.6	20	147N 15kgf	6g
120-013-712	152F-04-1	3.6~ 4.4	20.5	147N 15kgf	6g
120-013-713	152F-05-1	4.4~ 5.2	21.5	147N 15kgf	6g
120-013-714	152F-06-1	5.2~ 6	22.5	147N 15kgf	6g

No.	Part Name	Material	Finish
①	Plug	Brass	Chrome
②	Ring	Steel	Passivation
③	Socket	Zinc Alloy	Clear Zinc Chromate
④	Nut	Steel	Chromate

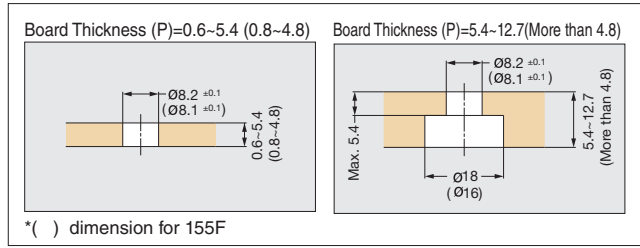
PUSH LOCK FASTENER (MINI/BUTTON TYPE)

255F, 155F

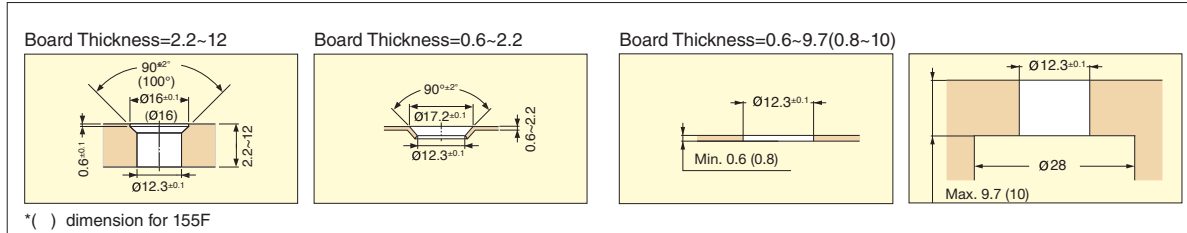


- 2 piece fastener allows for fast and easy access with complete removal of panel.
 - Attach socket into outer panel / plug into removable panel.
 - Insert plug into socket and push to lock / unlock.
- Flush locked design prevents snagging.
- Fastens plastic or sheet metal panels.

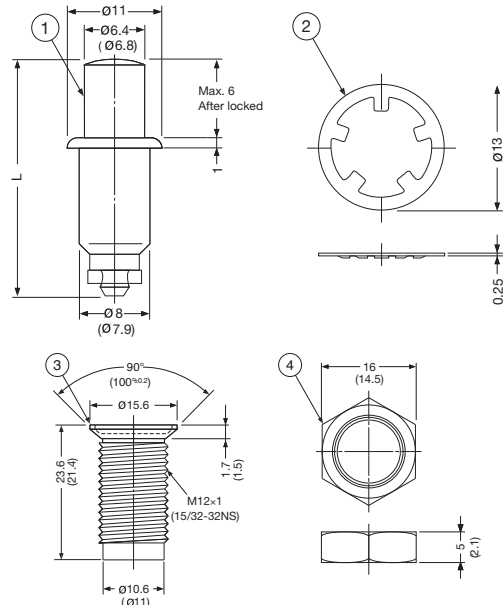
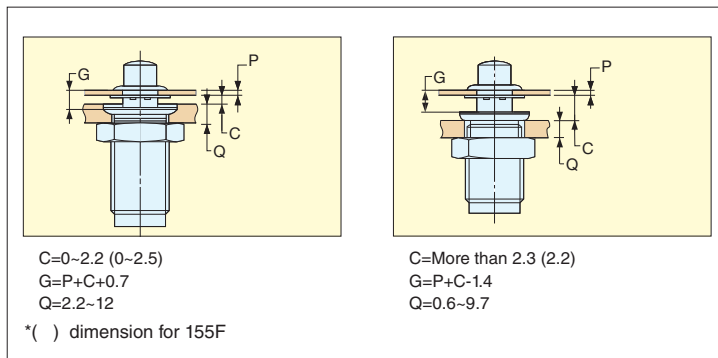
Preparation (Plug)



Preparation (Socket)



Grip Dimensions



255F

Item Code	Set Item Name	Grip Dimension G	Plug Dimension L	Retaining Force	Weight
120-040-299	255F-01-3	1.2~2.8	23.5	147N 15kgf	6g
120-040-300	255F-03-3	2.8~4.4	25	147N 15kgf	6g
120-040-301	255F-05-3	4.4~6	25.5	147N 15kgf	6g

No.	Part Name	Material	Finish/Color
①	Plug	Poryaceta	Black
②	RIng	Steel	Black
③	Socket	Poryaceta	Black
④	Nut	Poryaceta	Black

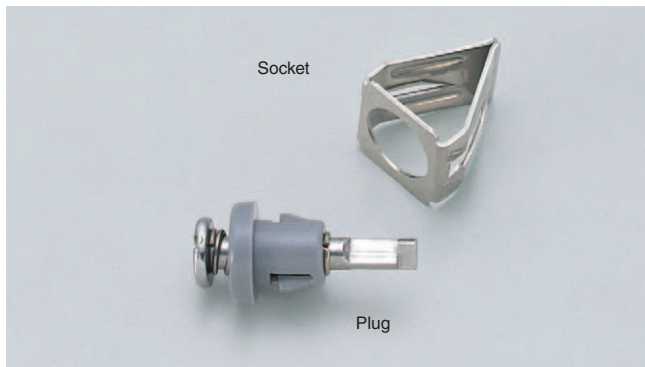
155F

Item Code	Set Item Name	Grip Dimension G	Plug Dimension L	Retaining Force	Weight
120-013-715	155F-01-1	1.2~2.8	23.5	147N 15kgf	6g
120-013-716	155F-03-1	2.8~4.4	25	147N 15kgf	6g
120-013-717	155F-05-1	4.4~6	26.5	147N 15kgf	6g

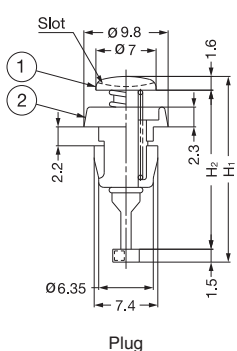
No.	Part Name	Material	Finish
①	Plug	Zinc Alloy	Chrome
②	RIng	Steel	Passivation
③	Socket	Zinc Alloy	Clear Zinc Chromate
④	Nut	Steel	Clear Zinc Chromate

PUSH LOCK FASTENER (PUSH-TURN TYPE)

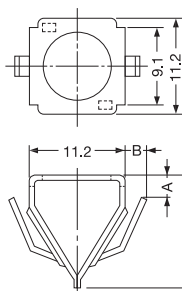
149 SERIES



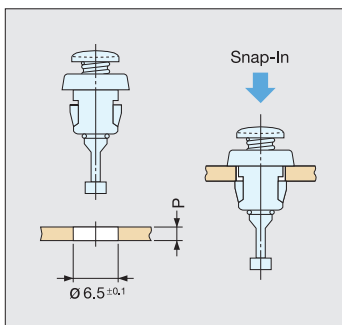
- 2 piece fastener allows for fast and easy access with complete removal of panel.
 - Attach socket into outer panel / plug into removable panel.
 - Insert plug into socket and push to lock / unlock.
- Flush design when locked prevents snagging.
- Fastens plastic or sheet metal panels.



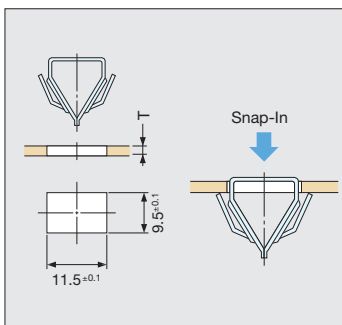
Plug



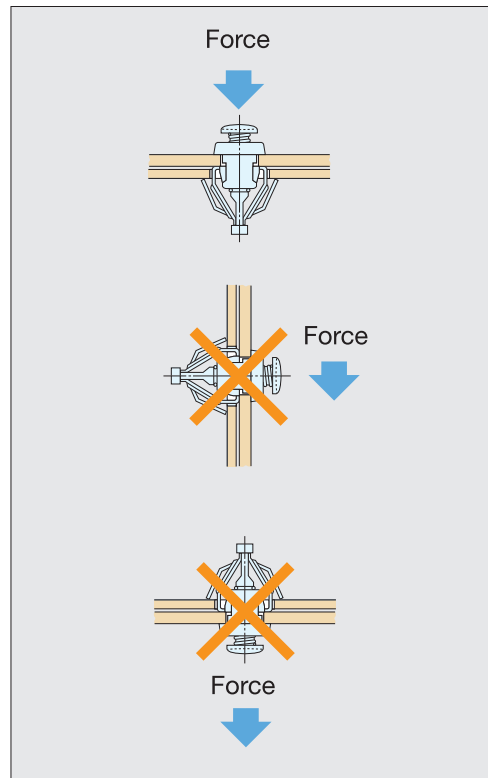
Socket



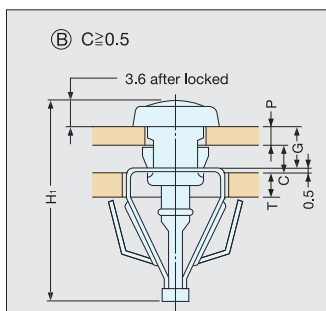
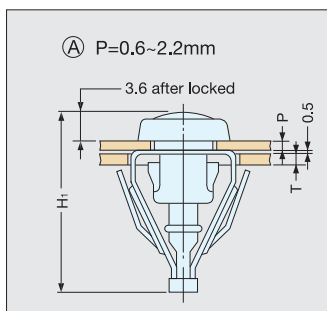
Preparation (Plug)



Preparation (Socket)



Application Example



No.	Part Name	Material	Finish/Color
①	Pin	Stainless Steel(SUS430)	Plain
②	Cup	Plastic	Grey

Plug

Item Code	Item Name	H ₁	H ₂	Weight
120-045-318	149S06-1-1AA	19.2	16.1	2g
120-049-416	149S06-2-1AA	20	16.9	2g
120-045-319	* 149S06-3-1AA	20.8	17.7	2g
120-048-022	149S06-4-1AA	21.6	18.5	2g
120-045-320	149S06-5-1AA	22.4	19.3	2g

* Made to order

Socket

Item Code	Item Name	A	B	Board Thickness T	Material	Weight
120-045-322	149R02-2-1AA	2.6	1.7	1.2 ~ 1.8	Stainless Steel(SUS304)	1g
120-045-323	149R02-3-1AA	3.6	7.9	1.8 ~ 2.6	Stainless Steel(SUS304)	1g

Ⓐ

Item Code	Item Name	Board Thickness P	H ₁
120-045-318	149S06-1-1AA	0.6~1.4	19.2
120-049-416	149S06-2-1AA	1.4~2.2	20

Ⓑ

Item Code	Item Name	G = T ₁ + C - 0.5	Board Thickness P	C
120-045-318	149S06-1-1AA	0.6~1.4	0.6~1.4	1.3~0.5
120-049-416	149S06-2-1AA	1.4~2.2	0.6~2.2	2.1~0.5
120-045-319	* 149S06-3-1AA	2.2~3	0.6~2.2	2.9~1.3
120-048-022	149S06-4-1AA	3~3.8	0.6~2.2	3.7~2.1
120-045-320	149S06-5-1AA	3.8~4.6	0.6~2.2	4.5~2.9

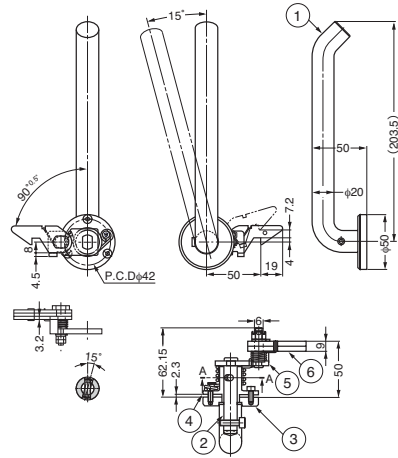
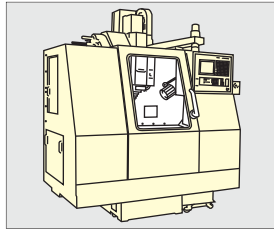
* Made to order

LATCH HANDLE

LH-203



Installation



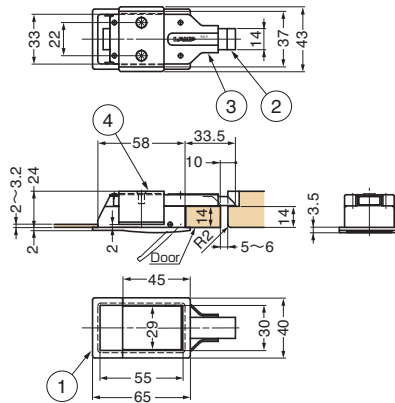
No.	Part Name	Material	Finish
①	Handle	Aluminum Alloy	Black
②	Axis	Steel	Yellow Zinc Chromate
③	Bracket	Brass	Black
④	Mounting Plate	Steel	Yellow Zinc Chromate
⑤	Plate A	Steel	Yellow Zinc Chromate
⑥	Plate B	Steel	Yellow Zinc Chromate

Item Code	Item Name	Weight
140-010-223	LH-203	500g

FLUSH SLAM LATCH

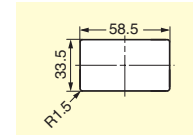


LC-65A



- Door will be latched when closed.
 - Pull paddle handle to open.
 - Non-Handed: Can be installed on left or right side.
 - Designed for panel thickness 2.0~3.2 mm.
 - Easy installation.
- Insert the latch body through cutout section and simply screw-on the back plate.

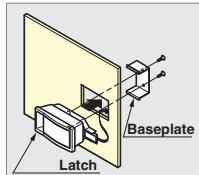
Bore Dimensions



Installation



Sheet metal thickness



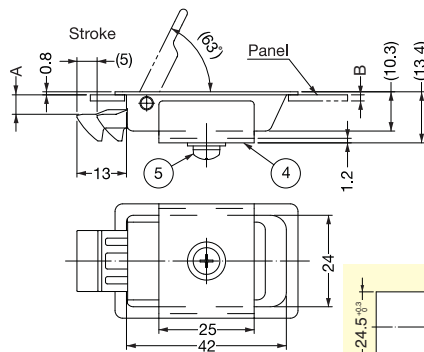
Item Code	Item Name	Door Thickness	Weight	Box	Carton
140-050-206	LC-65A	2 ~ 3.2	108g	10pcs	100pcs

No.	Part Name	Material	Finish
①	Body	Aluminum Alloy	Silver
②	Latch Bolt	Polyacetal	White
③	Cover	Stainless Steel(SUS304)	Polished
④	Base Plate	Stainless Steel(SUS304)	Polished

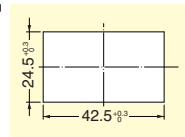
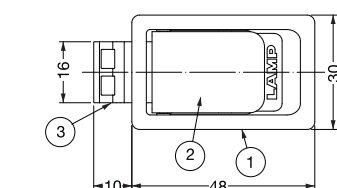
FLUSH SLAM LATCH



LC-48



- Door will be latched when closed.
 - Pull paddle handle to open.
 - Non-Handed: Can be installed on left or right side.
 - UL-94 V0 rated flame retardant material.
 - Easy installation.
- Insert the latch body through cutout section and simply screw-on the back plate.

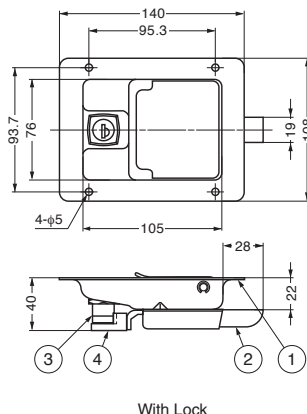


No.	Part Name	Material	Finish
①	Body	304 Stainless Steel	Plain
②	Lever		
③	Latch Bolt	PBT Plastic	White
④	Back Cover	304 Stainless Steel	Plain
⑤	Back Plate		

Item Code	Item Name	A	B	Weight (g)	Box (pcs)	Carton (pcs)
140-021-199	LC-48-3	3.5 (max. panel: 3.2mm)	1.0 ~ 1.6	35	40	400
140-021-200	LC-48-5	5.1 (max. panel: 4.6mm)	1.0 ~ 2.3	35	40	400

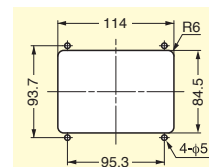
FLUSH SLAM LATCH

WB-900418, WB-900408



- Door will be latched when closed.
- Pull paddle handle to open.
- Max. 150 key changes available as made to order.
- With waterproof gasket.

■ Bore Dimensions



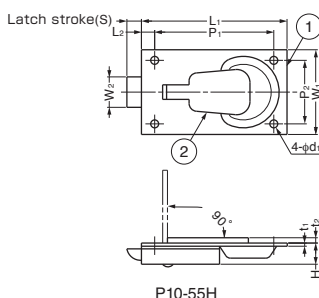
Item Code	Item Name	Spec.	Key type
140-010-030	WB-900418-B	With lock	Key Different
140-010-031	WB-900418-D	With lock	Key Alike
140-010-009	WB-900408	Without lock	-

No.	Part Name	Material	Finish
①	Body	Stainless Steel(SUS304)	Mirror
②	Latch Bolt	Steel	Clear Zinc Chromate
③	Cylinder	Zinc Alloy	Chrome
④	Cam	Steel	Clear Zinc Chromate

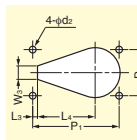
FLUSH SLAM LATCH



P10



■ Bore Dimensions



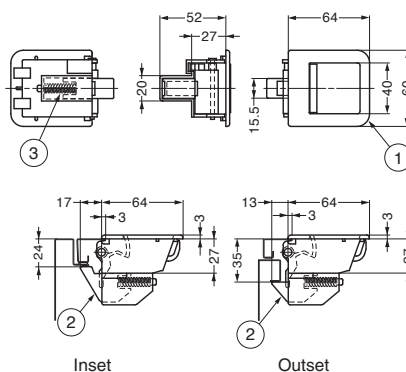
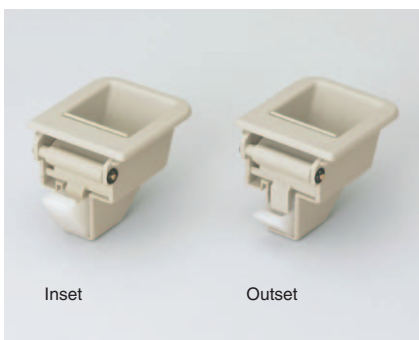
- Flush slam latch ideal for cover panels and small applications.
- Panel is latched when tab is flush, and released by pulling up the tab.
- Tab will stay in both flush and extended position.
- Ideal for multiple latch panels.

No.	Part Name	Material	Finish
①	Body	Brass	Nickel
②	Lever	Brass	Nickel

Item Code	Item Name	L ₁	L ₂	L ₃	L ₄	W ₁	W ₂	W ₃	H	t ₁	t ₂	P ₁	P ₂	d ₁	d ₂	R	S	Weight
140-049-310	P10-26H	26	1.5	4	14	13	5	5	6	0.8	1.5	23	10	1.5	2	5	2.5	6g
140-049-309	P10-30H	30	3	1.5	18	17	5.8	6	6.5	1.2	2	25	13	1.5	2	6	3	11g
140-049-308	P10-38H	38	3	2	22.5	22	7.5	6	7.5	1.2	2	33	17.5	2	2.5	8.5	3.5	18g
140-049-307	P10-45H	45	4	2.5	26.5	26	10	6	8	1.2	2	37	20	2.5	3	9.5	4.5	28g
140-049-306	P10-55H	55	5	2.5	30	32	11.5	7	8	1.2	2	45	24	3	3.5	13	5.5	40g
140-049-305	P10-61H	61	5.5	5	32	45	15	11	11.5	1.2	2	50	38	3	3.5	14	7	66g

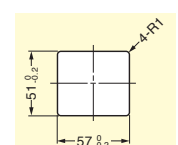
FLUSH SLAM LATCH

ATL-64



- Door will be latched when closed.
- Pull paddle handle to open.
- Non-Handed: Can be installed on left or right side.
- Available for inset and overlay doors.

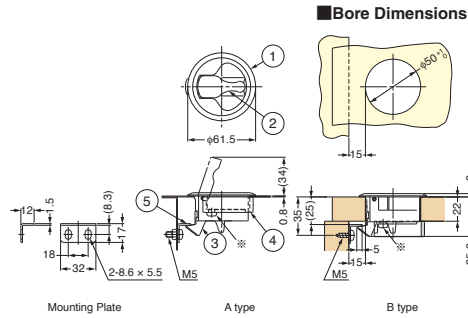
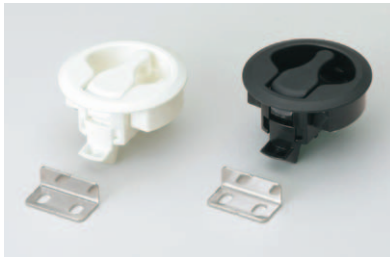
■ Bore Dimensions



Item Code	Item Name	Spec.	Door Thickness	Weight	Box
140-012-014	ATL-64-IN	For InsetDoor	0.7 ~ 1	44.5g	175pcs
140-012-019	ATL-64-OT	For OutsetDoor	0.7 ~ 1	44.4g	175pcs

No.	Part Name	Material	Finish/Color
①	Body	ABS	Dark Ivory
②	Latch	Nylon	Natural
③	Spring	Stainless Steel(SUS304)	Plain

FLUSH SLAM LATCH



■Screw

Spec.	Door Thickness	Screw
Type A	0.8~7.5	M5 × 12
Type A	8~12	M5 × 18
Type B	12.5~18.5	M5 × 12
Type B	19~22	M5 × 18

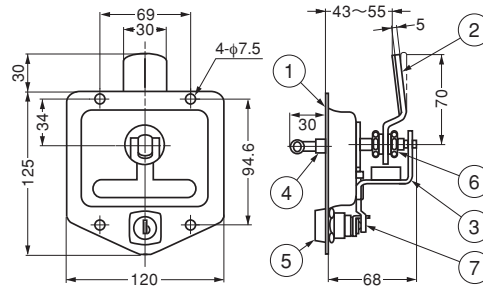
Item Code	Item Name	Color	Retaining Force (pc)	Box	Carton
140-050-031	LJ-61-BL	Black	147N	15kgf	10pcs 120pcs
140-059-200	LJ-61-WT	White	147N	15kgf	10pcs 120pcs

- Door will be latched when closed.
- Pull lever to open.
- Non-Handed: Can be installed on left or right side.
- All components are plastic, 304 or 316 stainless steel to provide high corrosion resistance.
- Easy installation.
Insert the latch body through single round cutout or bore section and screw-on the back plate.
Back plate is designed to accommodate door thickness 0.8mm ~ 12mm, and also 12.5mm ~ 22mm by flipping over the back plate.

No.	Part Name	Material	Finish/Color
①	Body	Polycarbonate	Black, White
②	Lever	Polycarbonate	Black, White
③	Latch	Polyacetal	Black, White
④	Fixing plate	Polycarbonate	Black, White
⑤	Strike	Stainless Steel (SUS316)	Mirror

FOLDING HANDLE LATCH

WB-901503, WB-901504

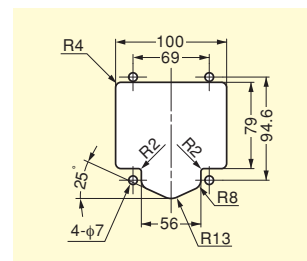


- Door can be sealed up.
- Height adjustable cam (12mm).
- With waterproof gasket.

No.	Part Name	Material	Finish
①	Body	Stainless Steel (SUS304)	Mirror
②	Cam	Steel	Yellow Zinc Chromate
③	Mounting plate	Steel	Yellow Zinc Chromate
④	Handle	Zinc Alloy	Chrome
⑤	Cylinder	Zinc Alloy	Chrome
⑥	Nut	Stainless Steel (SUS304)	Plain
⑦	Cam	Steel	Yellow Zinc Chromate

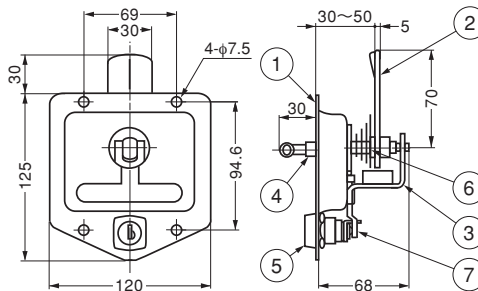
Item Code	Item Name	Spec.	KeyType
140-010-032	WB-901503-D	Anticlockwise	Key Alike
140-010-033	WB-901504-D	Clockwise	Key Alike

■Bore Dimensions



FOLDING HANDLE LATCH

WB-901551, WB-901552

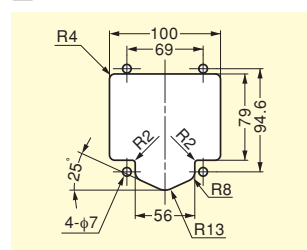


- Door can be sealed up.
- Height adjustable cam (12mm).
- With waterproof gasket.

No.	Part Name	Material	Finish
①	Body	Stainless Steel (SUS304)	Mirror
②	Cam	Steel	Yellow Zinc Chromate
③	Mounting plate	Steel	Yellow Zinc Chromate
④	Handle	Zinc Alloy	Chrome
⑤	Cylinder	Zinc Alloy	Chrome
⑥	Spring	Steel	Plain
⑦	Cam	Steel	Yellow Zinc Chromate

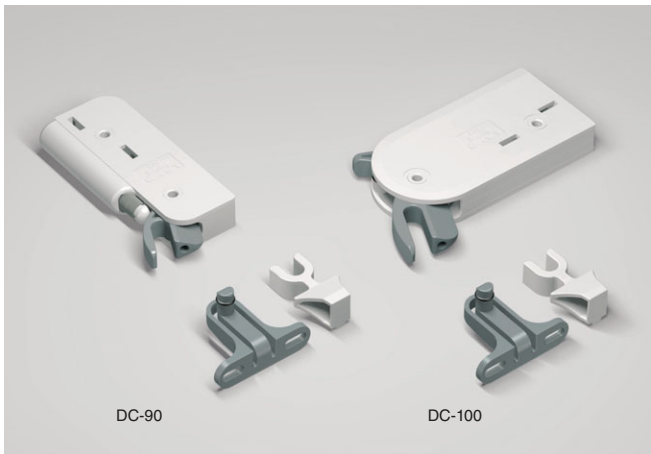
Item Code	Item Name	Spec.	KeyType
140-010-034	WB-901551-D	Anticlockwise	Key Alike
140-010-035	WB-901552-D	Clockwise	Key Alike

■Bore Dimensions



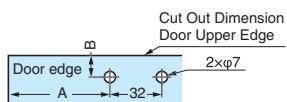
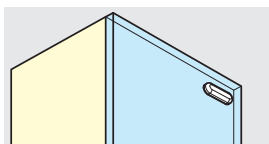
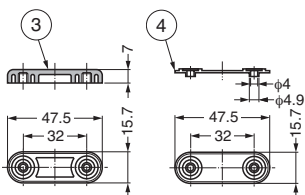
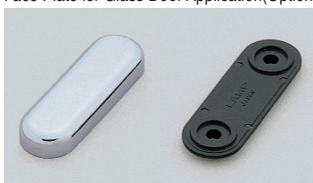
DAMPER CATCH

DC

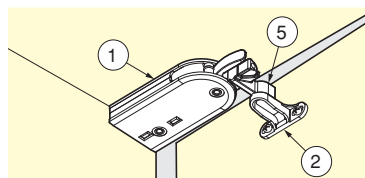
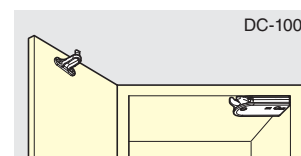
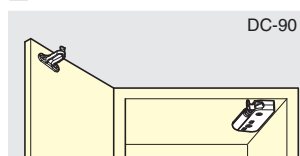


- Keeps cabinet doors from slamming shut.
- Holds the door in closed position.
- Available for wood and glass doors.
- Non Handed.
- Separate models for wood and glass doors.

Face Plate for Glass Door Application(Optional)



Installation



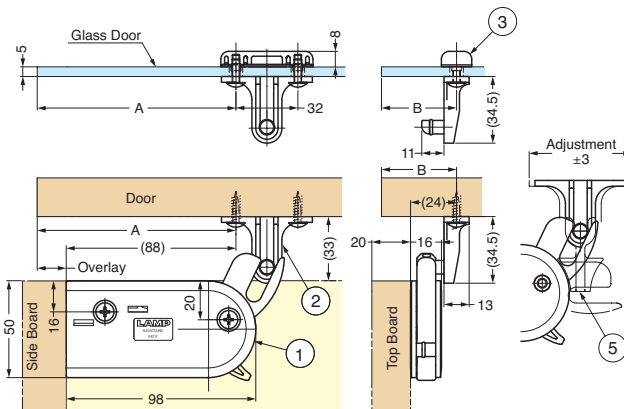
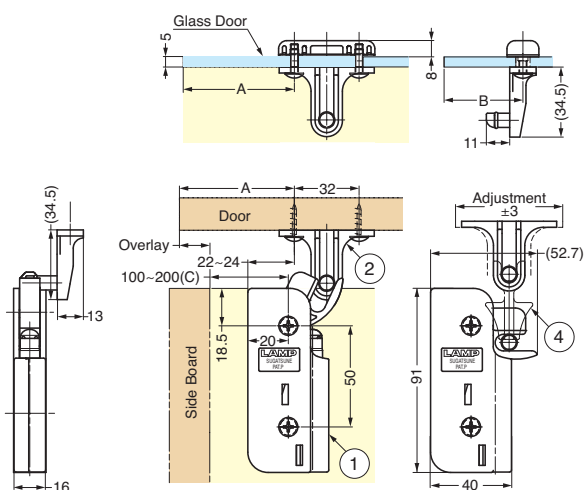
DC-90

Installation Position	A	B
Inset Door	$C - G_1 + 3$	$24 - G_2$
Outset Door	$C + \text{Overlay} + 3$	$\text{Overlay} + 24$

DC-100

Installation Position	A	B
Inset Door	$88 - G_1$	$24 - G_2$
Outset Door	$\text{Overlay} + 88$	$\text{Overlay} + 24$

G₁ is the gap between the door edge and the side board. G₂ is the gap between the edge of the door and the top board.



Face Plate (Sold Separately)

Item Code	Item Name	Weight	Box
180-100-260	SDS-50G-CR	25 g	50pcs

No.	Part Name	Material	Finish/Color
①	Body	Polyacetal (POM)/PBT	Dark Grey /Light Grey
②	Trigger	Polyacetal (POM)	Dark Grey
③	Face Plate	Zinc Alloy (ZDC)	Chrome
④	Spacer	ABS	Black
⑤	Trigger Installation Jig	PBT	Light Grey

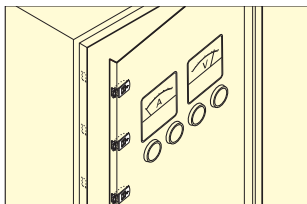
Item Code	Item Name	Spec.	Door Width	Door Height	Door Thickness	Door Weight	Weight	Box	Carton
140-021-697	DC-90	For Wooden Door	450	700	-	4kg	46 g	25	200pcs
140-021-698	DC-90G	For Glass Door	450	700	5	4kg	71 g	25	200pcs
140-021-699	DC-100	For Wooden Door	600	900	-	7kg	66 g	25	200pcs
140-021-700	DC-100G	For Glass Door	600	900	5	7kg	91 g	25	200pcs

QUICK RELEASE LATCH

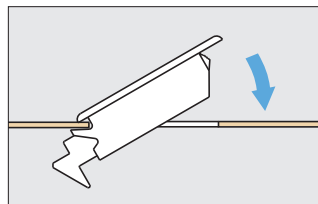


- Snap-in installation.
- Automatically latches when the panel is closed.
- Release multiple latches simultaneously with temporary hold-open feature.
- (No need to hold finger on latch when releasing)
- All components are plastic and 304 stainless steel to provide high corrosion resistance.
- UL94-V0 rated flame retardant material.

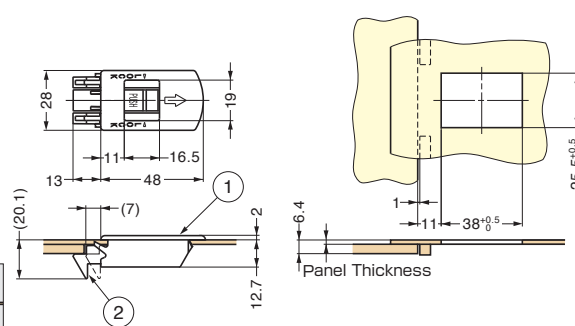
Use Multiple Latches



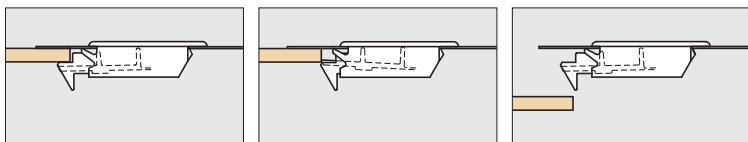
Snap Into Panel



Cut Out Dimensions



Operation



Locks when panel is closed.

Hold-Open Feature
Each latch will hold in an opened position allowing user to release multiple latches at the same time.

Lever & latch is reset when the panel opens.

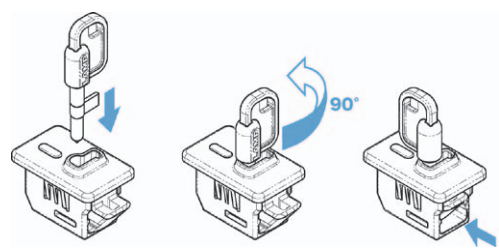
No.	Part Name	Material	Finish
①	Body	Polyamide (UL94V-0)	Silver
②	Latch	Polyacetal (UL94HB)	Silver
-	Spring	Stainless Steel (SUS304)	-

Item Code	Item Name	Panel Thickness	Color	Retaining Force (pc)	Weight	Box	Carton	
140-050-037	SX-48	0.8,1.0,1.2,1.6,2.0,2.3	Black	49N	5kg	11g	40pcs	400pcs

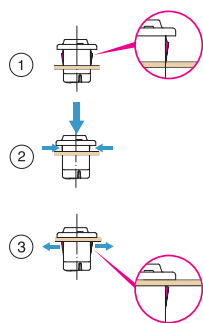
QUICK RELEASE LATCH WITH LOCKING

LC-PK32

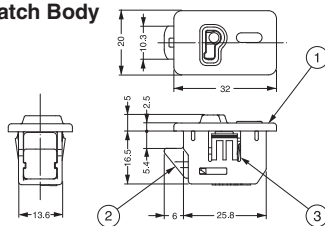
Operation



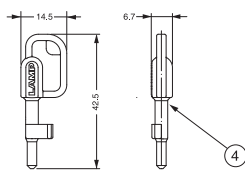
Installation



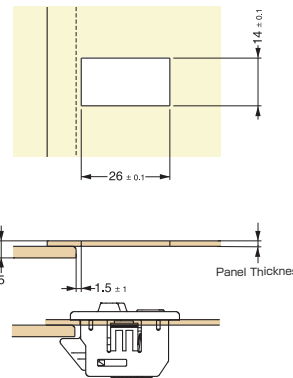
Latch Body



Key



Cut Out Dimensions



- Keylocking style restricts access.
- Single-hole, snap-in installation.
- UL94-VO rated flame retardant material.
- Non-corrosive materials.
- Key is removable in locked position only.

Latch Body

Item Code	Item Name	Color	Door Thickness	Weight	Box	Carton
140-020-694	LC-PK32-L-BL	Black	1.2,1.5,1.6	6g	72pcs	720pcs
140-020-695	LC-PK32-L-GR	Grey	1.2,1.5,1.6	6g	72pcs	720pcs

Key (Sold Separately)

Item Code	Item Name	Finish	Weight	Box	Carton
140-020-696	LC-PK32-K	Nickel	7g	200pcs	2000pcs

No.	Part Name	Material
①	Body	Polypropylene
②	Latch	PBT
③	Spring	Stainless Steel (SUS304)
④	Key	Zinc Alloy

PANEL LATCH With Locking

LC-PK32

Compact locking panel latch, yet full of innovations.

NEW!

RoHS



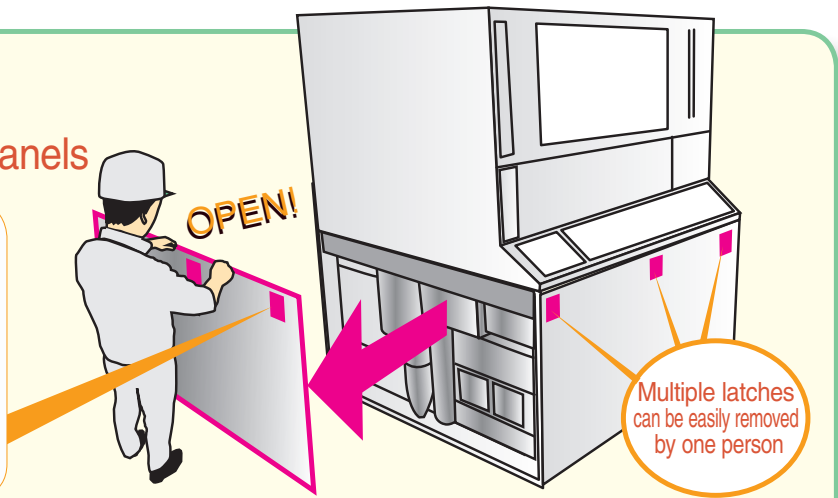
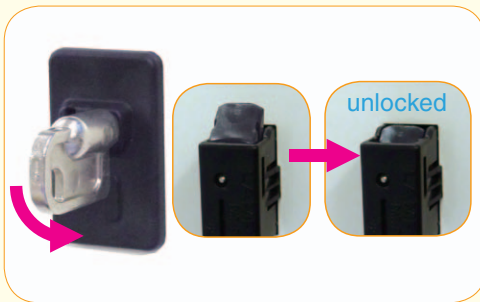
Color variations: Black, Grey



4 Major highlights. Add up to efficiency & security!

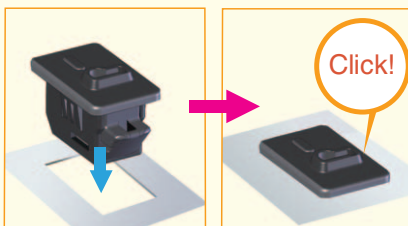
1

Easy latching & removal of panels



2

One touch installation



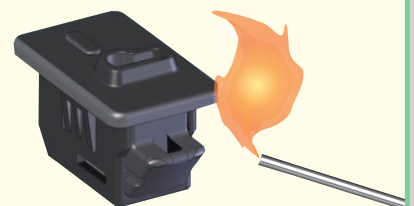
3

Comes with locking function



4

UL94-V0 rated flame retardant material

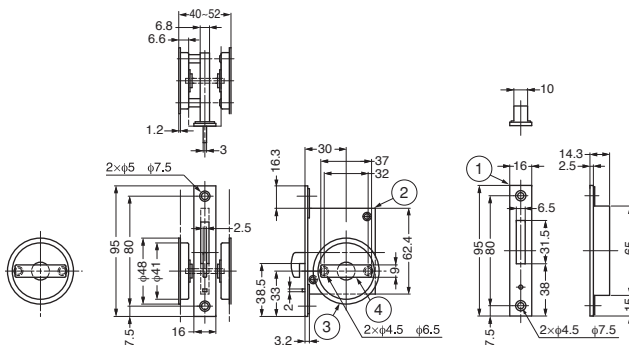


SLIDING DOOR LATCH

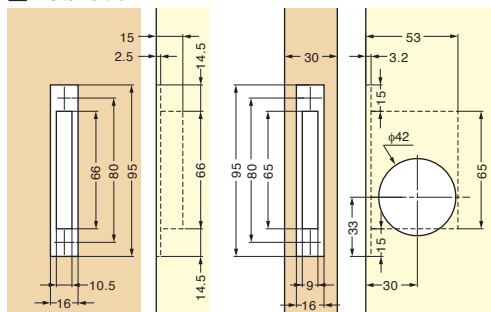
HC-30R



- Slim design suitable for various applications.
- Non-Handed: Can be installed on left or right side.
- For door thickness 40 ~ 52mm.



Installation



Item Code	Item Name	Weight (g)	Box (pcs)	Carton (pcs)
140-022-282	HC-30R	280	5	50

Material	Finish
304 Stainless, Brass, Zinc Alloy	Satin, Chrome

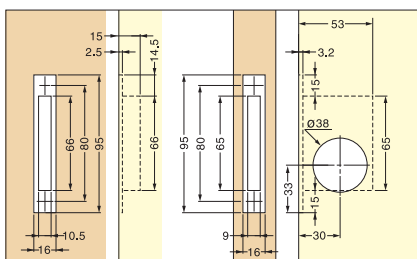
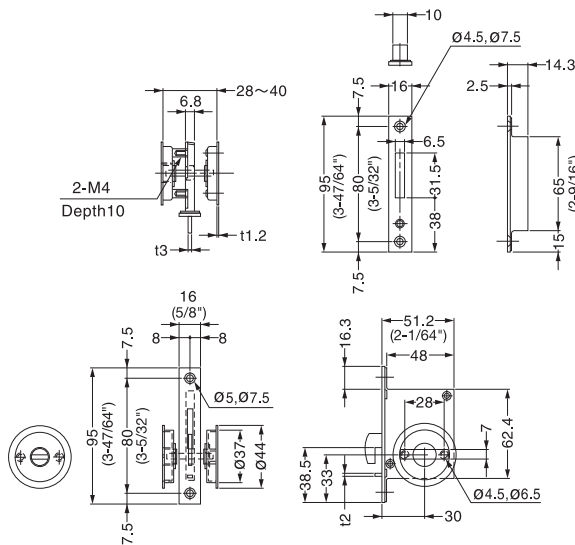
SLIDING DOOR LATCH



HC-30



- Slim design suitable for various applications.
- Non-Handed: Can be installed on left or right side.
- For door thickness 28 ~ 40mm.
- For sliding doors only.



Bore Dimensions

Item Code	Item Name	Weight (g)	Box (pcs)	Carton (pcs)	Material	Finish
140-183-251	HC-30	258	5	50	304 Stainless Steel, Brass, Zinc Alloy	Satin

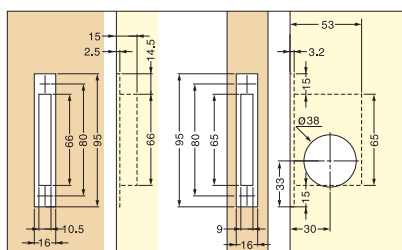
SLIDING DOOR LATCH W/INDICATOR



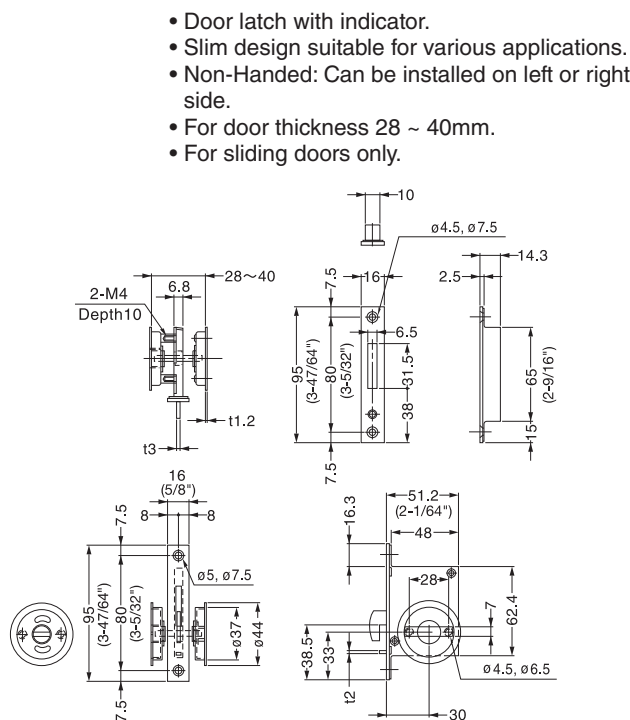
HC-30H



Opposite Side



Bore Dimensions



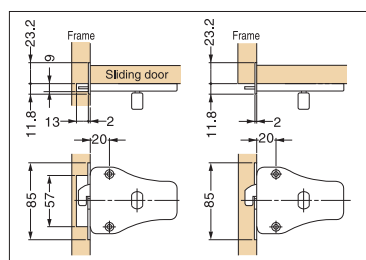
- Door latch with indicator.
- Slim design suitable for various applications.
- Non-Handed: Can be installed on left or right side.
- For door thickness 28 ~ 40mm.
- For sliding doors only.

Item Code	Item Name	Weight (g)	Box (pcs)	Carton (pcs)	Material	Finish
140-183-250	HC-30H	259	5	50	304 Stainless Steel, Brass, Zinc Alloy	50

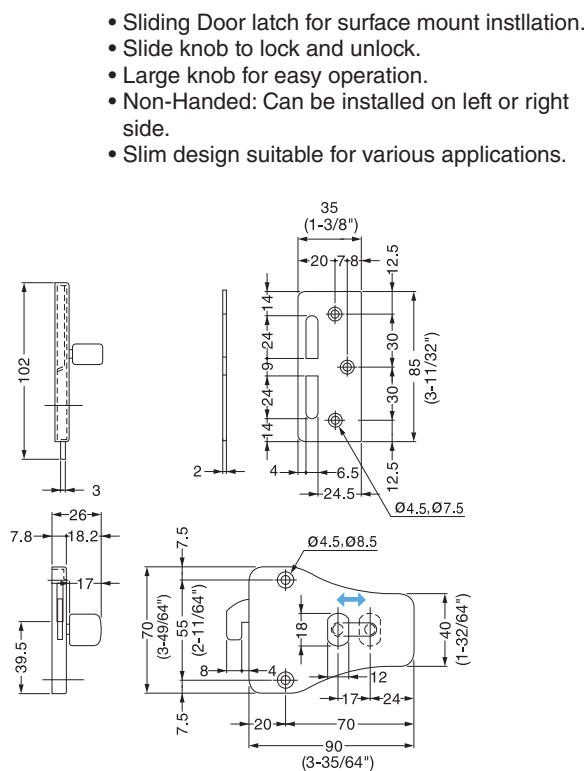
SLIDING DOOR LATCH



HC-70



Installation



- Sliding Door latch for surface mount installation.
- Slide knob to lock and unlock.
- Large knob for easy operation.
- Non-Handed: Can be installed on left or right side.
- Slim design suitable for various applications.

Item Code	Item Name	Weight (g)	Box (pcs)	Carton (pcs)	Material	Finish
140-183-255	HC-70	197	5	50	304 Stainless Steel, Brass	Satin

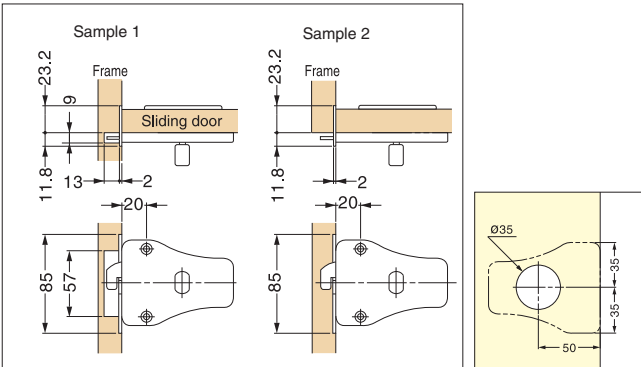
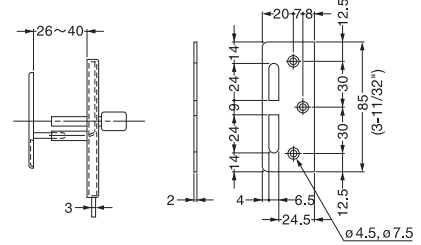
SLIDING DOOR LATCH W/INDICATOR



HC-70H



- Sliding Door latch with indicator and large knob.
- Slide knob to lock and unlock.
- Slim design suitable for various application.
- Large knob for easy operation.
- Non-Handed: Can be installed on left or right side.
- For door thickness 26 ~ 40mm.



Installation

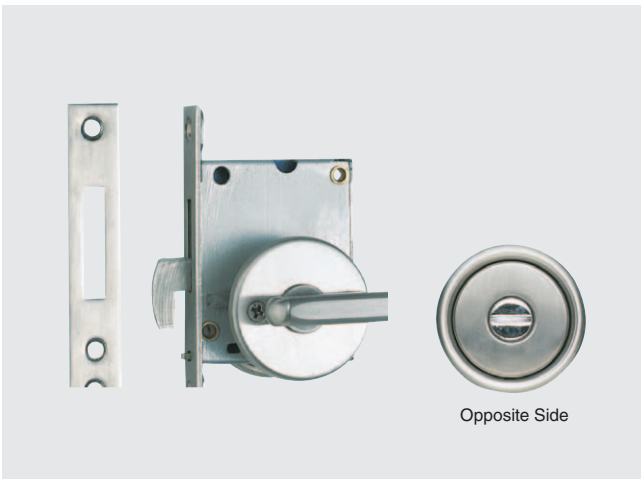
Bore Dimensions

Item Code	Item Name	Weight (g)	Box (pcs)	Carton (pcs)	Material	Finish
140-183-254	HC-70H	297	5	50	304 Stainless Steel, Brass	Satin

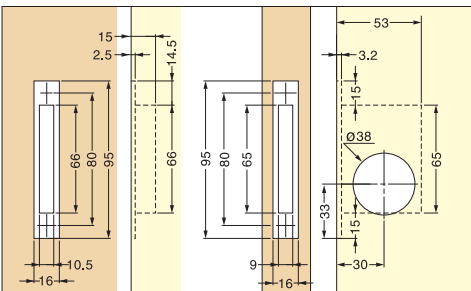
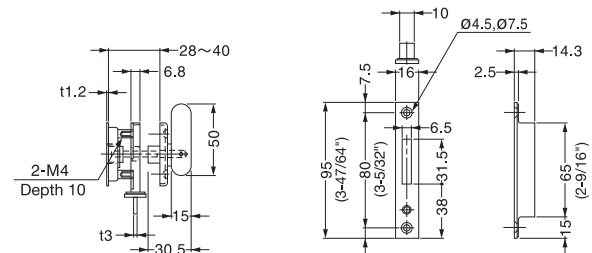
SLIDING DOOR LATCH



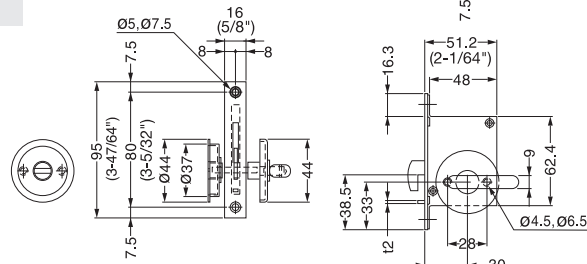
HC-30L



- Sliding Door latch with large lever for easy operation.
- Slim design suitable for various applications.
- Non-Handed: Can be installed on left or right side.
- For door thickness 28 ~ 40mm.



Bore Dimensions

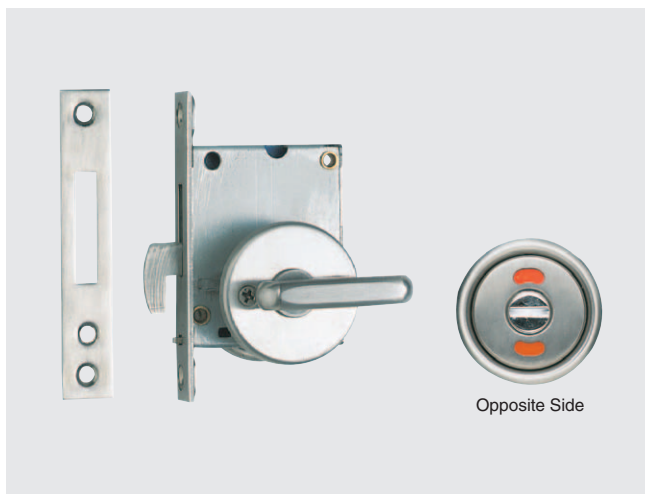


Item Code	Item Name	Weight (g)	Box (pcs)	Carton (pcs)	Material	Finish
140-183-253	HC-30L	309	5	50	304 Stainless Steel, Brass, Zinc Alloy	Satin

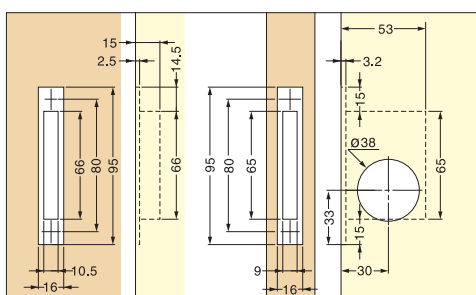
SLIDING DOOR LATCH W/INDICATOR



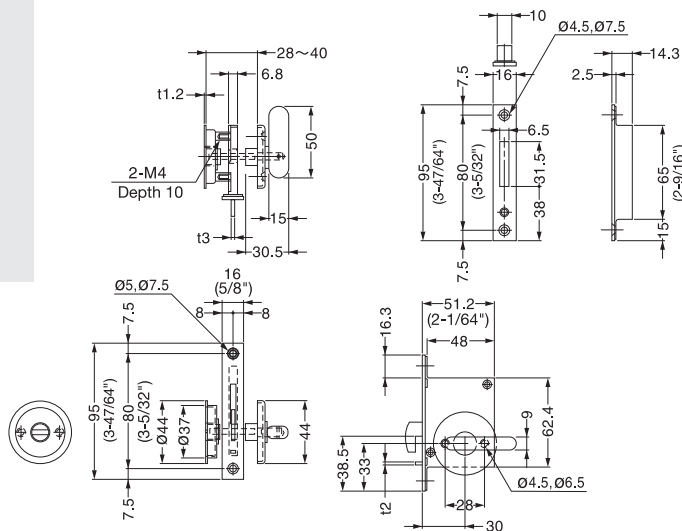
HC-30HL



- Sliding Door latch with indicator.
- Large lever for easy operation.
- Slim design suitable for various applications.
- Non-Handed: Can be installed on left or right side.
- For door thickness 28 ~ 40mm.



Bore Dimensions



Item Code	Item Name	Weight (g)	Box (pcs)	Carton (pcs)	Material	Finish
140-183-252	HC-30HL	309	5	50	304 Stainless Steel, Brass, Zinc Alloy	Satin

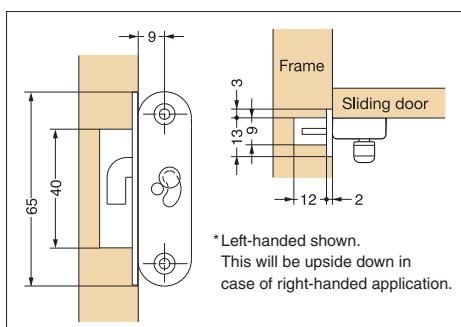
SLIDING DOOR LATCH



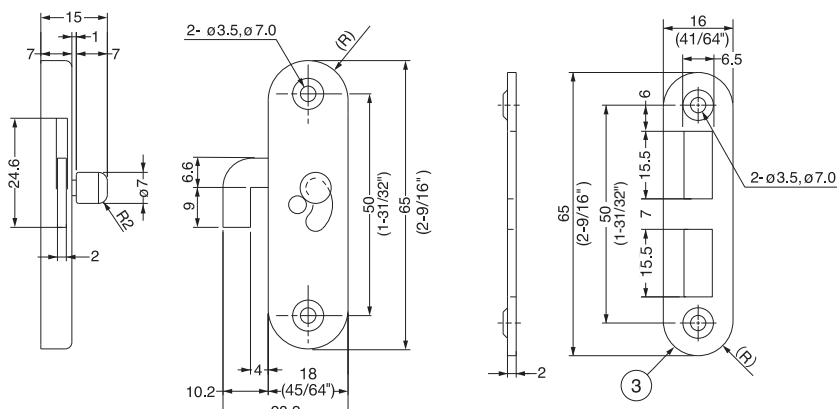
HC-65



- Surface mount type door latch with noticeable indicator.
- Extra slim and compact design.
- Simply slide up and down the knob to lock / unlock.
- Non-Handed: Can be installed on left or right side.



Installation

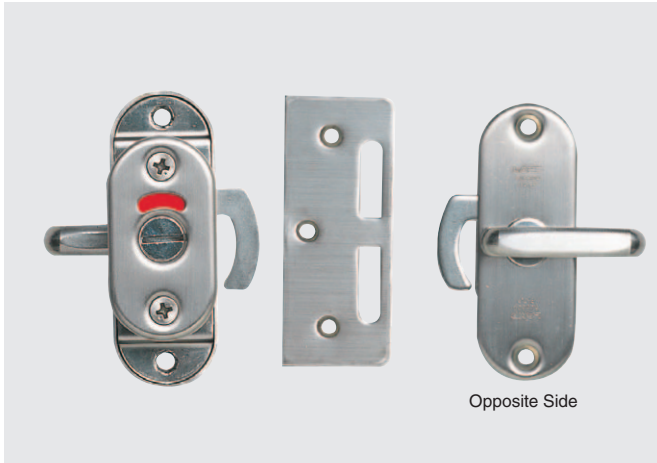


Item Code	Item Name	Weight (g)	Box (pcs)	Carton (pcs)	Material	Finish
140-180-578	HC-65	41	20	200	304 Stainless Steel, Brass	Satin

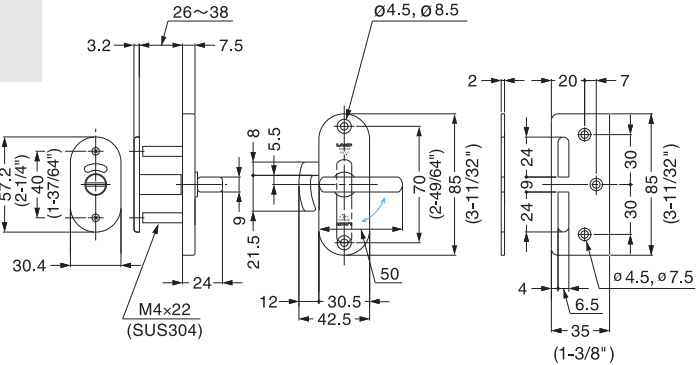
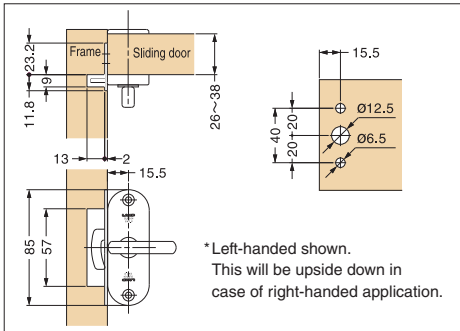


HHC-85

SLIDING DOOR LATCH



- Sliding Door latch with indicator.
- Slim design suitable for various applications.
- Large lever for easy operation.
- Non-Handed: Can be installed on left or right side.
- For door thickness 26 ~ 38mm.



Installation

Item Code	Item Name	Weight (g)	Box (pcs)	Carton (pcs)	Material	Finish
140-180-000	HHC-85	120	6	30	304 Stainless Steel, Brass	Satin

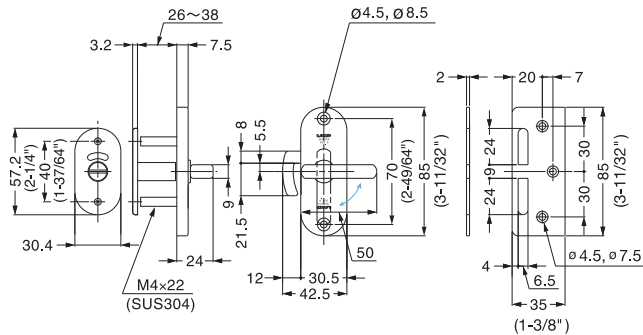
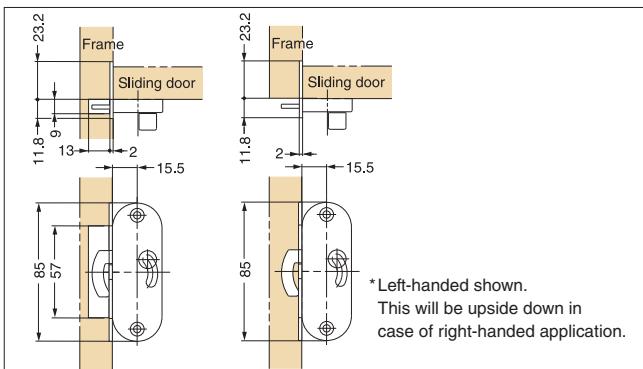
SLIDING DOOR LATCH



HC-85SS



- Surface mount type door latch with noticeable indicator.
- Simply slide up and down the knob to lock / unlock.
- Slim design suitable for various applications.
- Non-Handed: Can be installed on left or right side.



Installation

Item Code	Item Name	Weight (g)	Box (pcs)	Carton (pcs)	Material	Finish
140-170-774	HC-85SS	120	20	100	304 Stainless Steel, Brass	Satin