



# Video Inspection System

## Full HD (1080p)

inspect • rework • repair

# Full HD Video Inspection System

Exceptional live imaging. Effortless simplicity.



HD1080p  
Resolution

On screen magnification display.

With VisionZ<sub>2</sub>, it is all about the exceptional HD image.

And the simplicity. And the versatility. And the high quality, ergonomic design... all packed into a compact, lightweight unit, making VisionZ<sub>2</sub> highly portable too.

VisionZ<sub>2</sub> is ideal for a very wide range of precision magnification tasks, including:

**Production areas, R&D, Laboratory, Micro assembly, Electronics, Micro mechanics, Automotive, Dental technology, Medical device, Forensics, Quality control tasks, Presentation and training...**

- ✓ Exceptional full HD high contrast imaging.
- ✓ Integral image capture via USB.
- ✓ Extremely large field of view (295mm with standard 4D lens)
- ✓ Large working distance (250mm with standard 4D lens)
- ✓ Zoom magnification options up to 122x



Just plug in your USB stick...

**Vision**  
ENGINEERING

*Vision Engineering has over 50 years experience in the design and production of innovative inspection and measurement systems for the manufacturing sector.*

*Vision Engineering is ISO 9001:2008 certified. VisionZ<sub>2</sub> is manufactured in the EU and fully CE (EMC & safety) approved.*



## System details



- ✓ HD 1080p camera (1920x1080)
- ✓ 1.8x - 50x magnification\*
- ✓ Instant image capture via USB
- ✓ 250mm working distance\*
- ✓ Auto or manual focus
- ✓ Adjustable LED illumination

\* with standard 4D lens

**System functions are accessed via an integrated keypad.**

- Zoom in / out
- High contrast mode
- Crosshair size / colour
- Brightness
- Overview
- Image capture

## Options

### Struktura stand

Keep the workspace clear. Provides wide adjustment of the working distance, with ergonomically positioned monitor stand.

Note: VESA monitor interface required for Struktura stand.



### Magnification

(with 24" monitor)

Lens	Magnification
3D	1.3x - 36x
4D*	1.8x - 50x
5D**	2.3x - 62x

\* standard option with Benchtop stand

\*\*standard option with Struktura stand

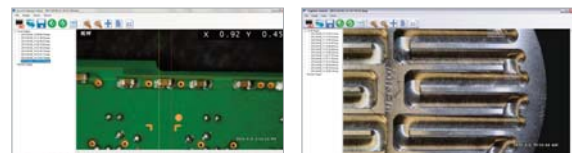
### External control console

The intelligent control console includes additional functions such as memory save / recall, image capture, overlay grid & dimensioning lines, as well as the convenience of mouse control.



### Imaging software

Instantly capture an HD image. The captured images can be used for further processing, or stored in a variety of formats including BMP, JPEG & TIFF.



**Note:** An HD (720p) camera option is also available.

# Technical

Optical Data						
Lens	Working distance (max.)	Magnification range*	Field of view min. magnification (width)	Field of view min. magnification (height)	Field of view max. magnification (width)	Field of view max. magnification (height)
3D	333mm	1.3x - 36x (71x digital)	390mm	226mm	14.2mm (8mm digital)	7.9mm (4mm digital)
4D	250mm	1.8x - 50x (98x digital)	295mm	172mm	10.3mm (5mm digital)	5.7mm (2.8mm digital)
5D	200mm	2.3x - 62x (122x digital)	234mm	137mm	8.2mm (4mm digital)	4.6mm (2.2mm digital)

\* with 24" monitor.

4D lens standard option with Benchtop stand.

5D lens standard with Struktura stand.

Specifications	
Camera resolution	HD 1080p (1920x1080)
Connections	HDMI out
Focus	Auto / manual
Dimensions	Benchtop stand: 410 mm x 240 mm x 350 mm
	Struktura stand: Height 700 mm x Arm max reach 800 mm
Weight	2.5kg
Power supply	100/240V, 50/60Hz
Power consumption	8 Watts
Recommended monitor*	16:9   DVI & HDMI Response time: 5ms   Signal: HD 1080p

\* Available with, or without monitor

Contact your Vision Engineering representative for recommended monitors.